

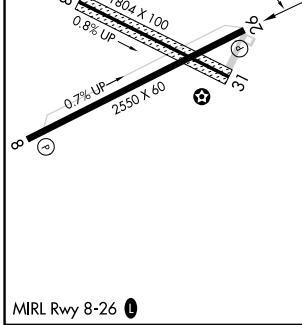
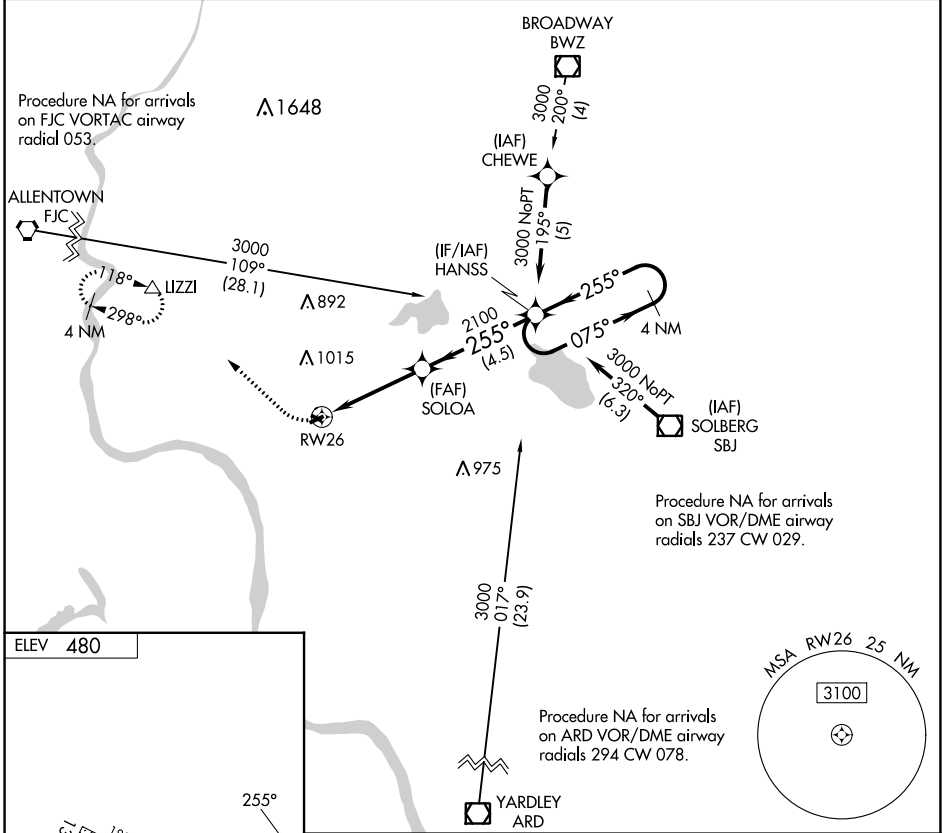
APP CRS <b>255°</b>	Rwy ldg TDZE Apt Elev	<b>NA</b> <b>NA</b> <b>480</b>
------------------------	-----------------------------	--------------------------------------

# RNAV (GPS)-B

ALEXANDRIA (N85)

<b>▽</b> <b>▲</b> NA	DME/DME RNP-0.3 NA. Use Lehigh Valley Intl, Allentown, PA altimeter setting. Procedure NA at night. Helicopter visibility reduction below 1 SM NA.	MISSED APPROACH: Climbing right turn 3000 direct LIZZI and hold.
-------------------------	--	--

ALLENTOWN APP CON <b>119.65 124.45 351.8</b>	UNICOM <b>122.975</b> (CTAF)	<b>121.8</b> <b>0</b>
---	---------------------------------	-----------------------



3000	LIZZI ▲	4 NM	HANSS Holding Pattern
		4 NM	4.5 NM
CATEGORY	A	B	C
<b>☐</b> CIRCLING	1240-1 760 (800-1)		NA

NE-2, 31 OCT 2024 to 28 NOV 2024

NE-2, 31 OCT 2024 to 28 NOV 2024