

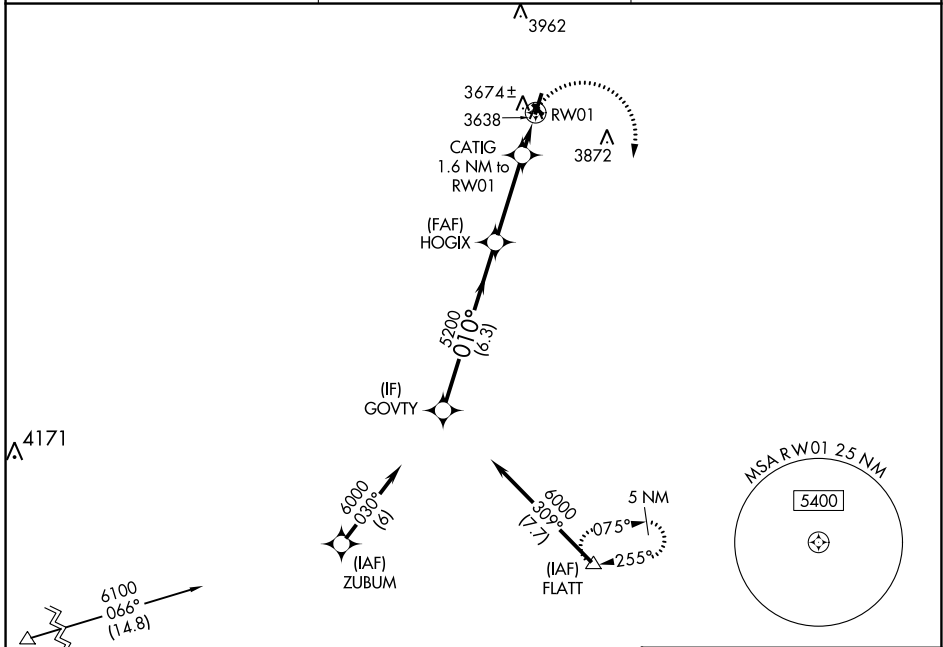
WAAS CH 66032 W01A	APP CRS 010°	Rwy Idg TDZE Apt Elev	4021 3611 3616
---------------------------------	------------------------	-----------------------------	---

RNAV (GPS) RWY 1

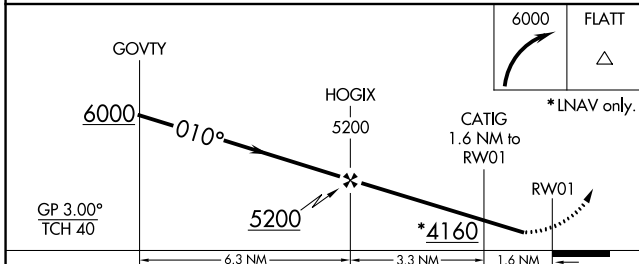
LITTLEFIELD TAYLOR BROWN MUNI (LIU)

W **NA** Baro-VNAV NA. Use Lubbock altimeter setting. DME/DME RNP-0.3 NA. Helicopter visibility reduction below 3/4 SM NA. MISSED APPROACH: Climbing right turn to 6000 direct FLATT and hold.

LBB ASOS 125.3 270.275	LUBBOCK APP CON 119.2 351.8	UNICOM 122.8 (CTAF)
----------------------------------	---------------------------------------	-------------------------------

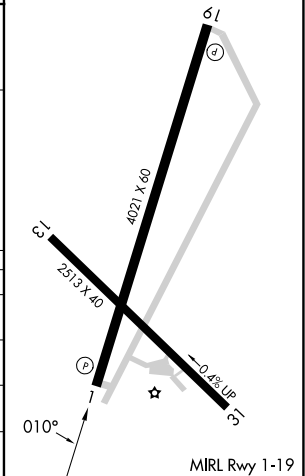


WINNYS 6100 066° (114.8)



CATEGORY	A	B	C	D
LPV DA	3982-1¼	371 (400-1¼)		NA
LNAV/VNAV DA	3982-1¼	371 (400-1¼)		NA
LNAV MDA	4060-1	449 (500-1)		NA
C CIRCLING	4100-1 484 (500-1)	4240-1 624 (700-1)		NA

ELEV 3616	TDZE 3611
-----------	-----------



SC-2, 31 OCT 2024 to 28 NOV 2024

SC-2, 31 OCT 2024 to 28 NOV 2024