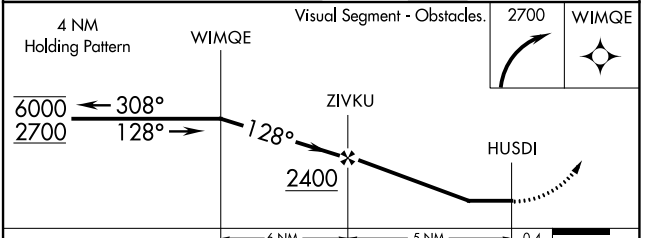
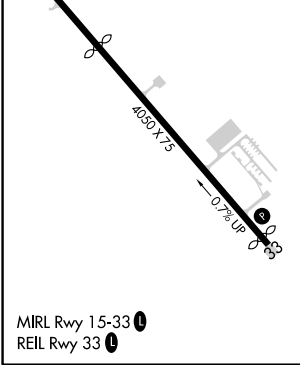
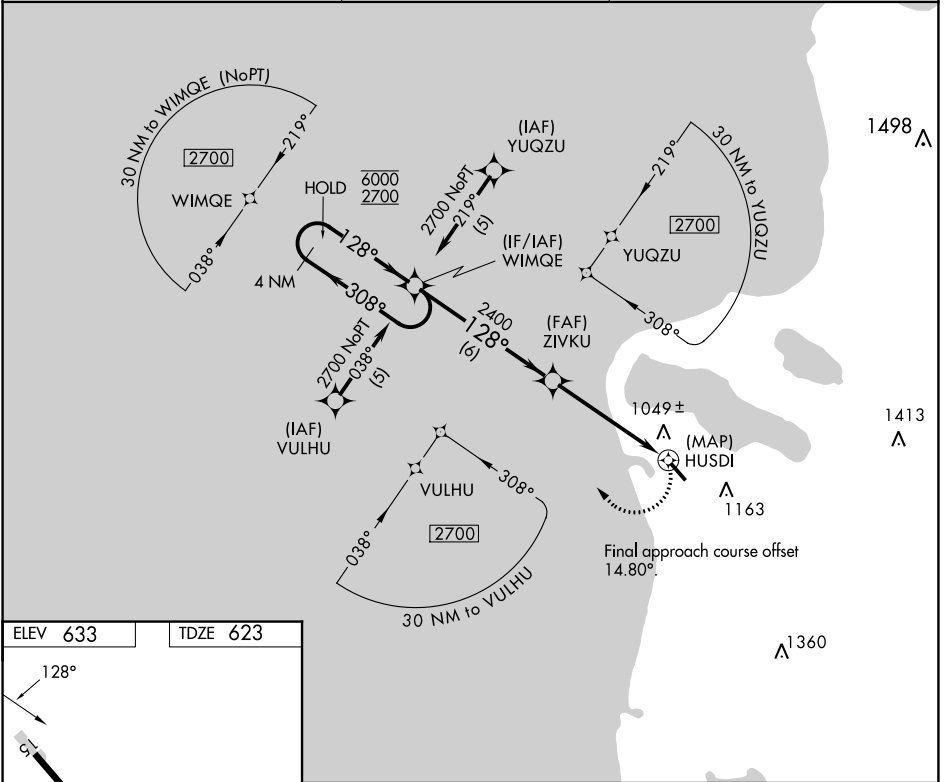


APP CRS 128°	Rwy Idg TDZE Apt Elev	2956 623 633
------------------------	-----------------------------	---

RNAV (GPS) RWY 15

FRANKFORT DOW MEML FLD (F'KS)

RNP APCH - GPS.		MISSED APPROACH: Climbing right turn to 2700 direct WIMQE and hold.
<p>▼ Procedure NA at night. Rwy 15 helicopter visibility reduction below 1 SM NA. When local altimeter setting not received, use Manistee altimeter setting and increase all MDA's 60 feet and Circling Cat A visibility ¼ SM.</p>		
AWOS-3P 118.325	MINNEAPOLIS CENTER 132.9 338.3	UNICOM 123.05 (CTAF) 0



CATEGORY	A	B	C	D
LNAV MDA	1300-1	677 (700-1)	1300-1 ⁷ / ₈ 677 (700-1 ⁷ / ₈)	NA
C CIRCLING	1400-1 767 (800-1)	1520-1 ¹ / ₄ 887 (900-1 ¹ / ₄)	1520-2 ³ / ₄ 887 (900-2 ³ / ₄)	NA

EC-1, 31 OCT 2024 to 28 NOV 2024

EC-1, 31 OCT 2024 to 28 NOV 2024