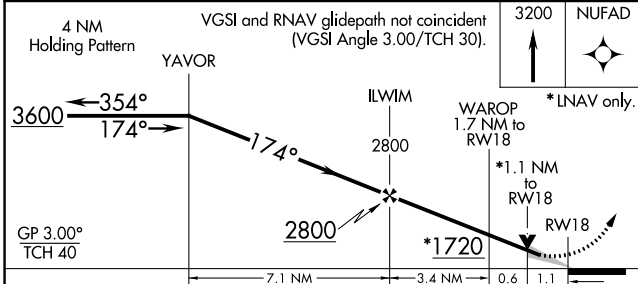
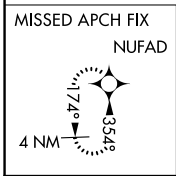
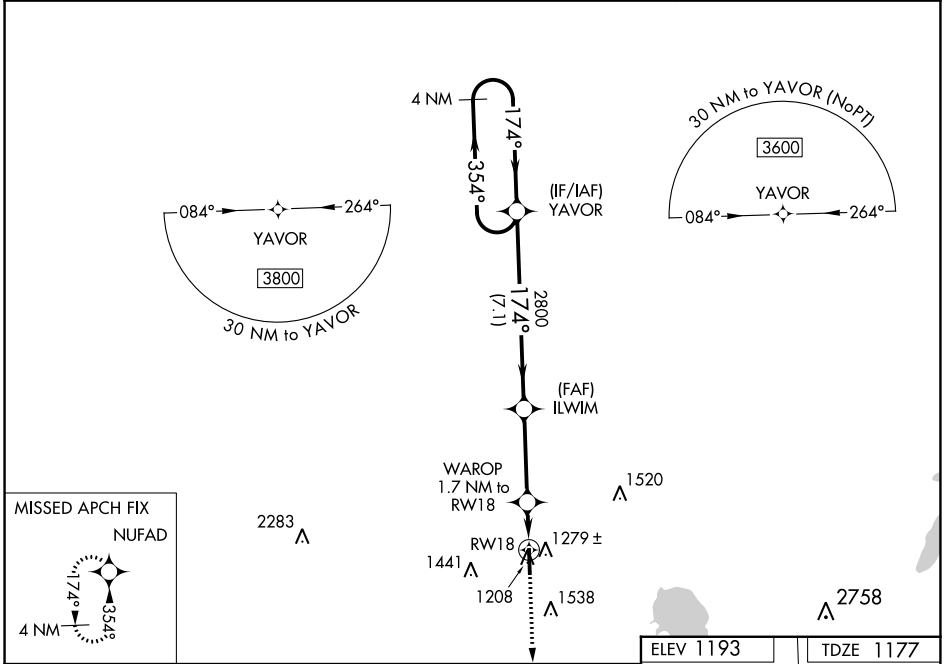


WAAS CH 81923 W18A	APP CRS 174°	Rwy Idg 5001 TDZE 1177 Apt Elev 1193
--	------------------------	---

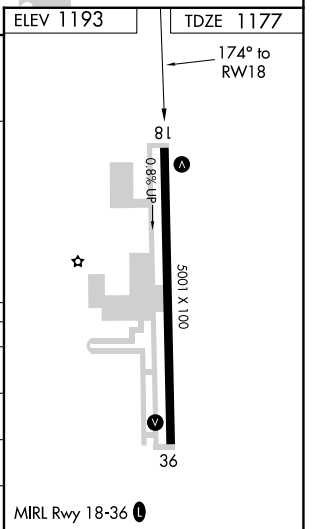
RNAV (GPS) RWY 18

SUNDANCE (HSD)

<p>⚠ For uncompensated Baro-VNAV systems, LNAV/VNAV NA below -17°C (2°F) or above 54°C (130°F). Baro-VNAV and VDP NA when using Wiley Post altimeter setting. DME/DME RNP-0.3 NA. Circling Rwy 36 NA at night.</p>			<p>MISSED APPROACH: Climb to 3200 direct NUFAD and hold.</p>
AWOS-3 120.975	OKE CITY APP CON 124.6 266.8	CLNC DEL 123.7	UNICOM 122.7 (CTAF) 0



CATEGORY	A	B	C	D
LPV DA	1427-1	250 (300-1)		NA
LNAV/VNAV DA	1473-1½	296 (300-1½)		NA
LNAV MDA	1540-1	363 (400-1)	1540-1½ 363 (400-1½)	NA
CIRCLING	1740-1 547 (600-1)	1840-1 647 (700-1)	1840-1¾ 647 (700-1¾)	NA



SC-1, 31 OCT 2024 to 28 NOV 2024

SC-1, 31 OCT 2024 to 28 NOV 2024