

VORTAC SQS 114.7 Chan 94	APP CRS 145°	Rwy Idg TDZE Apt Elev	N/A N/A 340
--	------------------------	-----------------------------	--

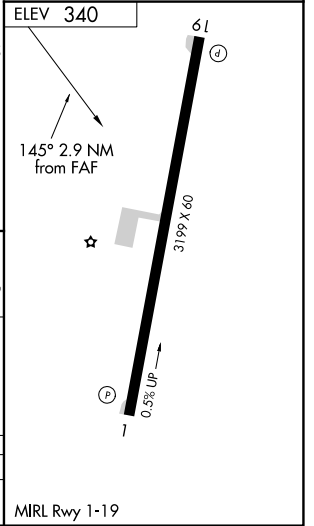
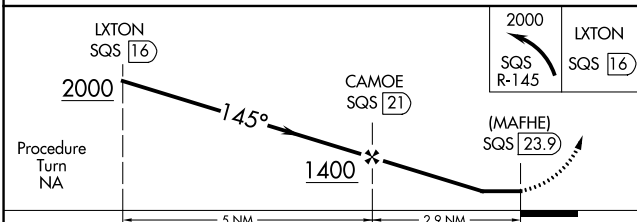
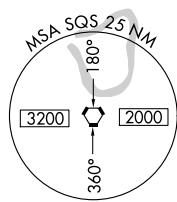
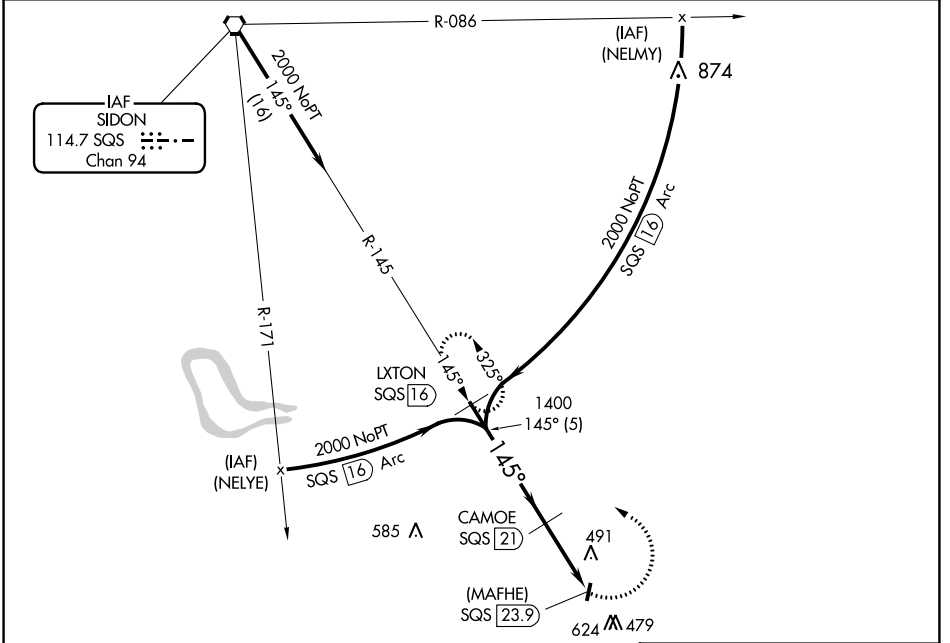
VOR/DME or GPS-A

C A MOORE (19M)

▼ Use Greenwood altimeter setting.
▲ NA Procedure NA at night.
 Helicopter visibility reduction below 1 SM NA.

MISSED APPROACH: Climbing left turn to 2000 on SQS R-145 to LXTON 16 DME and hold.

GWO ASQS 119.975	MEMPHIS CENTER 132.5 259.1	CTAF 122.9
----------------------------	--------------------------------------	----------------------



CATEGORY	A	B	C	D
CIRCLING	920-1 580 (600-1)	960-1¼ 620 (700-1¼)	1020-2 680 (700-2)	NA

SC-4, 31 OCT 2024 to 28 NOV 2024

SC-4, 31 OCT 2024 to 28 NOV 2024