

WAAS CH 69418 W25A	APP CRS 247°	Rwy Idg 3434 TDZE 8 Apt Elev 9
--	------------------------	---

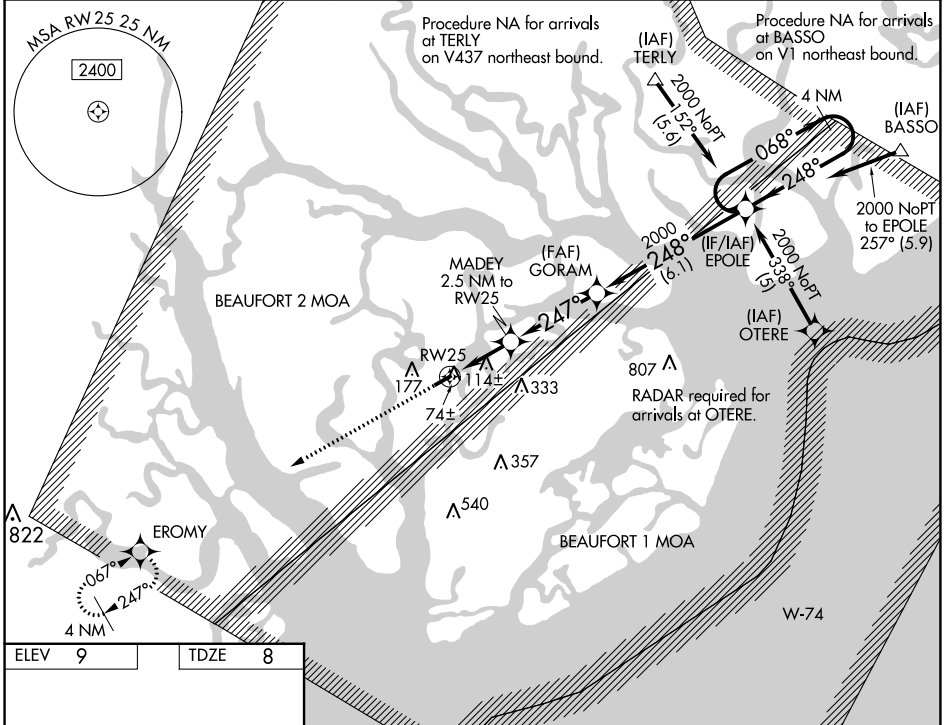
RNAV (GPS) RWY 25

BEAUFORT EXEC (A.R.W)

ASR For uncompensated Baro-VNAV systems, LNAV/VNAV NA below -15°C (5°F) or above 54°C (130°F). DME/DME RNP-0.3 NA. When local altimeter setting not received, use Beaufort MCAS (Merritt Fld) altimeter setting and increase LPV DA to 226, LNAV/VNAV DA to 352, and all MDA 20 feet. VDP and Baro-VNAV NA when using Beaufort MCAS (Merritt Fld) altimeter setting.

MISSED APPROACH: Climb to 2000 direct EROMY and hold.

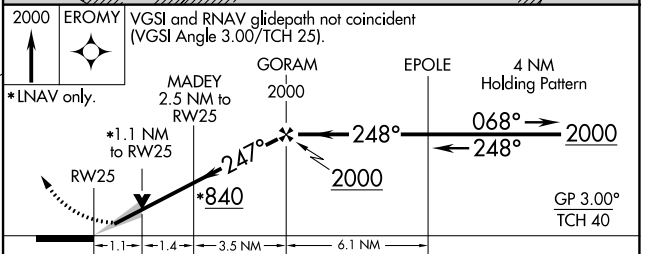
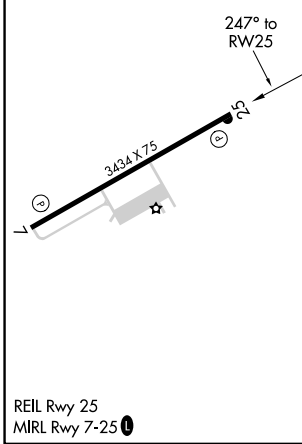
AWOS-3 119.675	BEAUFORT APP CON* 125.125 292.125	UNICOM 122.7 (CTAF)
--------------------------	---	-------------------------------



SE-2, 31 OCT 2024 to 28 NOV 2024

SE-2, 31 OCT 2024 to 28 NOV 2024

ELEV 9	TDZE 8
---------------	---------------



CATEGORY	A	B	C	D
LPV DA		208-1	200 (200-1)	NA
LNAV/VNAV DA		334-1¼	326 (400-1¼)	NA
LNAV MDA		380-1	372 (400-1)	NA
CIRCLING	480-1	471 (500-1)	640-1¾ 631 (700-1¾)	NA