

APP CRS <b>133°</b>	Rwy Idg <b>3381</b>
	TDZE <b>1132</b>
	Apt Elev <b>1132</b>

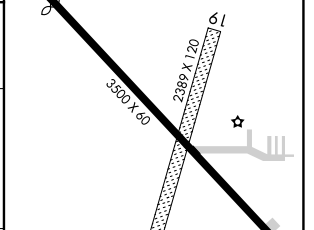
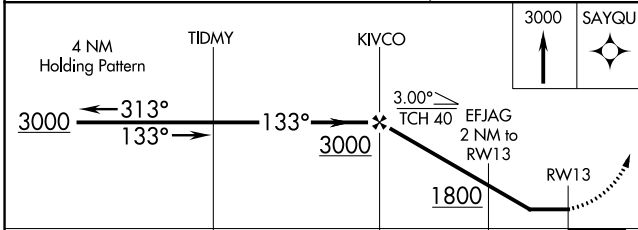
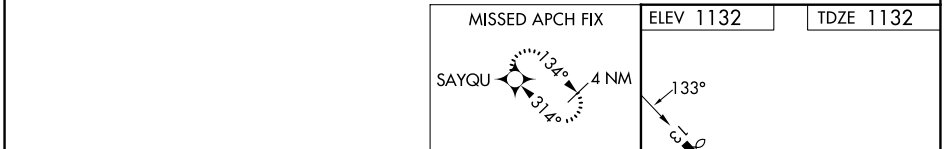
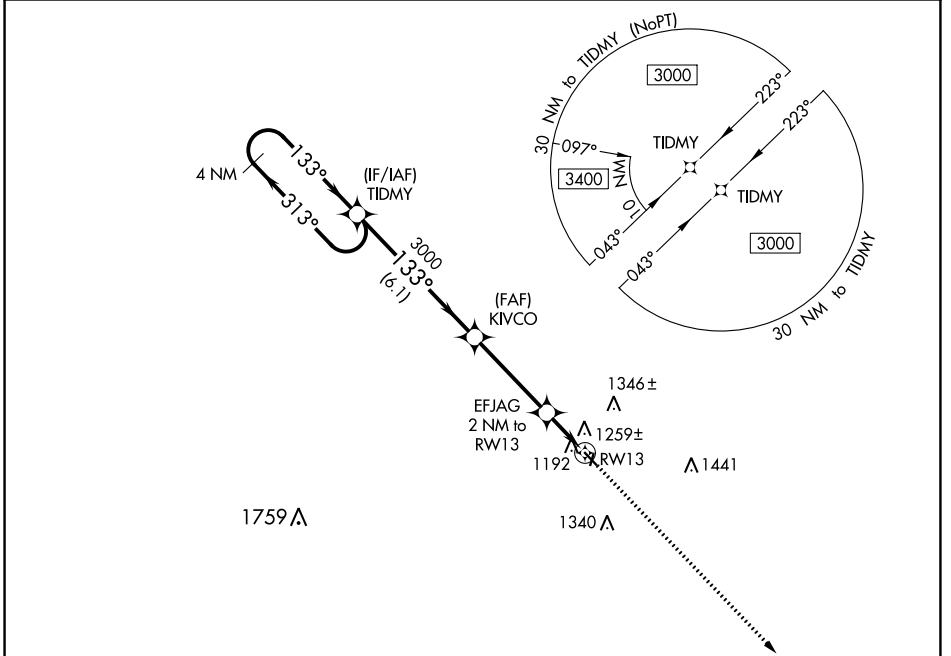
# RNAV (GPS) RWY 13

EAGLE GROVE MUNI (EAG)

**▽** DME/DME RNP-0.3 NA. Use Clarion altimeter setting, when not received, use Fort Dodge altimeter setting and increase all MDA 20 feet. Helicopter visibility reduction below 1 SM NA. Night Landing: Rwy 13 NA. Circling NA to Rwy 1 and 19.

**△** NA MISSED APPROACH: Climb to 3000 direct SAYQU and hold.

CAV AWOS-3 <b>126.575</b>	MINNEAPOLIS CENTER <b>134.0 288.3</b>	UNICOM <b>122.8 (CTAF) 0</b>
------------------------------	--	---------------------------------



CATEGORY	A	B	C	D
LNAV MDA	1540-1	408 (500-1)	NA	
<b>C</b> CIRCLING	1660-1	528 (600-1)	NA	

MIRL Rwy 13-31 **0**

REIL Rwy 13 and 31 **0**

NC-3, 31 OCT 2024 to 28 NOV 2024

NC-3, 31 OCT 2024 to 28 NOV 2024