

VORTAC RSW 114.15 Chan 88(Y)	APP CRS 244°	Rwy Idg 12000 TDZE 30 Apt Elev 30
--	------------------------	--

VOR or TACAN RWY 24

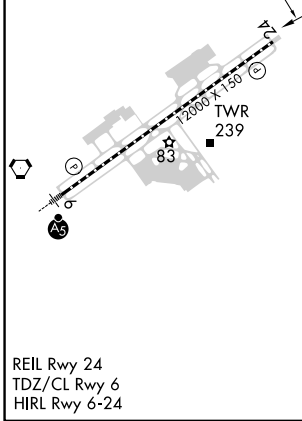
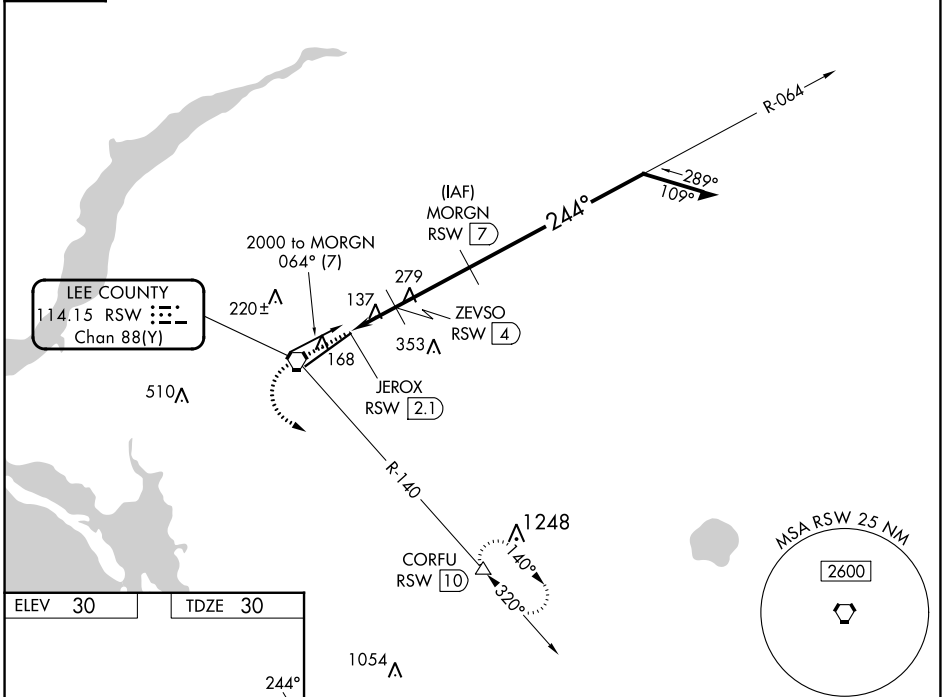
SOUTHWEST FLORIDA INTL (RSW)

DME required.

▼ Rwy 24 helicopter visibility reduction below 3/4 SM NA.

MISSED APPROACH: Climb to 1000 then climbing left turn to 2300 on RSW VORTAC R-140 to CORFU/RSW 10 DME and hold.

D-ATIS 124.65	FORT MYERS APP CON ★ 125.15 306.2 (RWY 6) 126.8 306.2 (RWY 24)	FORT MYERS TOWER ★ 128.75 (CTAF) 0 257.8	GND CON 121.9 257.8	CLNC DEL 132.075	UNICOM 122.95
CPDLC					



ELEV 30	TDZE 30				
1000	2300	RSW R-140	CORFU	VGSIs and descent angles not coincident (VGSIs Angle 3.00/TCH 72). Remain within 10 NM	
MORGN RSW [7]		ZEVSO RSW [4]		064°	
JEROX RSW [2.1]		RSW [3.1]		244°	
660		≤ 2.94° TCH 52		1600	
0.9		0.9		3 NM	
CATEGORY	A	B	C	D	
S-24	400-1		370 (400-1)		
CIRCLING	560-1	530 (600-1)	580-1½ 550 (600-1½)	660-2 630 (700-2)	

SE-3, 31 OCT 2024 to 28 NOV 2024

SE-3, 31 OCT 2024 to 28 NOV 2024