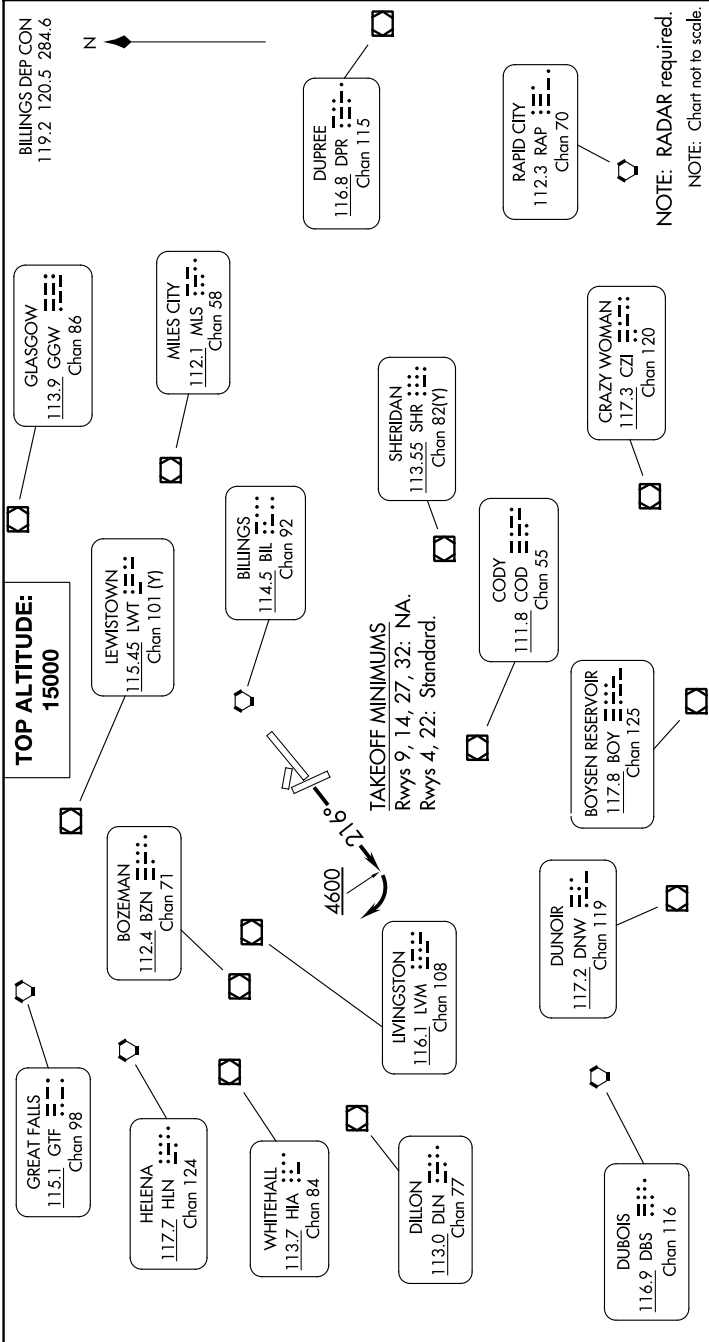


BILLINGS FIVE DEPARTURE

AL-6781 (FAA)

LAUREL MUNI (6S8)
LAUREL, MONTANA

NW-1, 31 OCT 2024 to 28 NOV 2024



DEPARTURE ROUTE DESCRIPTION

TAKEOFF RUNWAY 4: Climb on assigned heading for vectors to assigned fix/route, thence. . . .

TAKEOFF RUNWAY 22: Climb heading 216° to 4600 before turning right, then on assigned heading for vectors to assigned fix/route, thence. . . .

. . . . maintain 15000 or assigned lower altitude. Expect clearance to filed altitude/flight level five minutes after departure.

LOST COMMUNICATIONS: If no transmissions are received for 1 minute after departure, fly last assigned heading until reaching 7000. Proceed direct BIL VORTAC, then on last routing cleared and climb to filed altitude.

BILLINGS FIVE DEPARTURE

LAUREL, MONTANA
LAUREL MUNI (6S8)

NW-1, 31 OCT 2024 to 28 NOV 2024