

VORTAC BIL 114.5 Chan 92	APP CRS 208°	Rwy Idg TDZE Apt Elev	5199 3472 3543
---------------------------------------	------------------------	-----------------------------	---

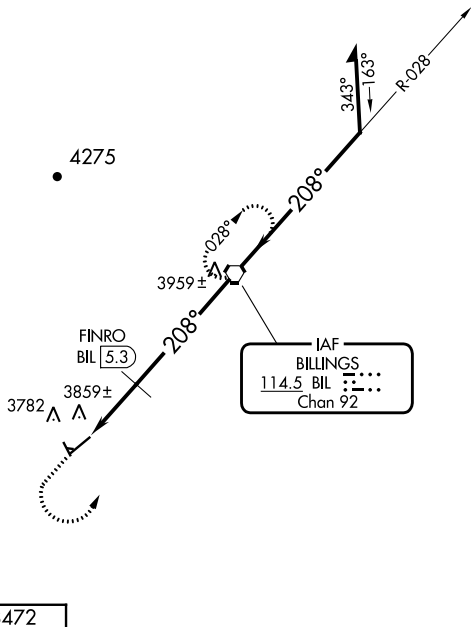
VOR RWY 22

LAUREL MUNI (6S8)

⚠ When local altimeter setting not received, use Billings altimeter setting: increase Circling Cats C and D MDAs 60 feet and Circling Cat C visibility ¼ SM; FINRO fix minimums: increase Circling Cats C and D MDAs 60 feet and Circling Cat C visibility ¼ SM. Rwy 22 helicopter visibility reduction below ¾ SM NA. Circling NA to Rwy 9 and 27. Circling Rwy 14, 32 NA at night.

MISSED APPROACH: Climb to 4700 then climbing left turn to 6300 direct BIL VORTAC and hold.

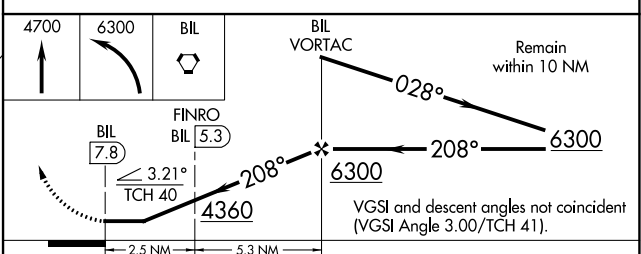
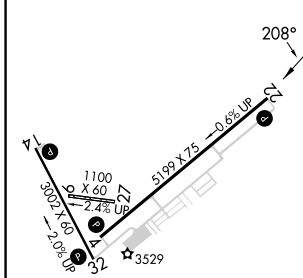
AWOS-2 135.05	BILLINGS APP CON 119.2 120.5 284.6	AUNICOM 123.05 (CTAF) ①
-------------------------	--	-----------------------------------



NW-1, 31 OCT 2024 to 28 NOV 2024

NW-1, 31 OCT 2024 to 28 NOV 2024

ELEV 3543	TDZE 3472
-----------	-----------



MIRL Rwy 4-22 and 14-32 ①

FAF to MAP 7.8 NM

Knots	60	90	120	150	180
Min:Sec	7:48	5:12	3:54	3:07	2:36

CATEGORY	A	B	C	D
S-22	4360-1¼ 888 (900-1¼)		4360-2¾ 888 (900-2¾)	4360-3 888 (900-3)
CIRCLING	4360-1¼ 817 (900-1¼)		4460-2¾ 917 (1000-2¾)	4560-3 1017 (1100-3)
FINRO FIX MINIMUMS				
S-22	4160-1 688 (700-1)		4160-2 688 (700-2)	4160-2¼ 688 (700-2¼)
CIRCLING	4220-1 677 (700-1)		4460-2¾ 917 (1000-2¾)	4560-3 1017 (1100-3)