

APP CRS 280°	Rwy ldg TDZE Apt Elev	N/A N/A 828
------------------------	-----------------------------	--

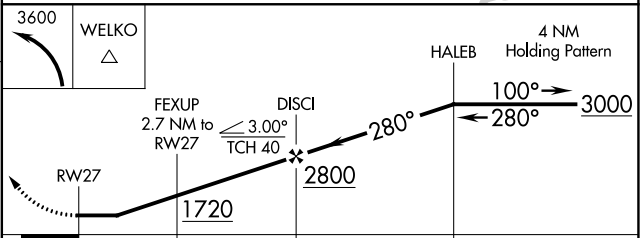
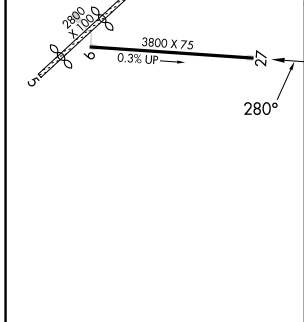
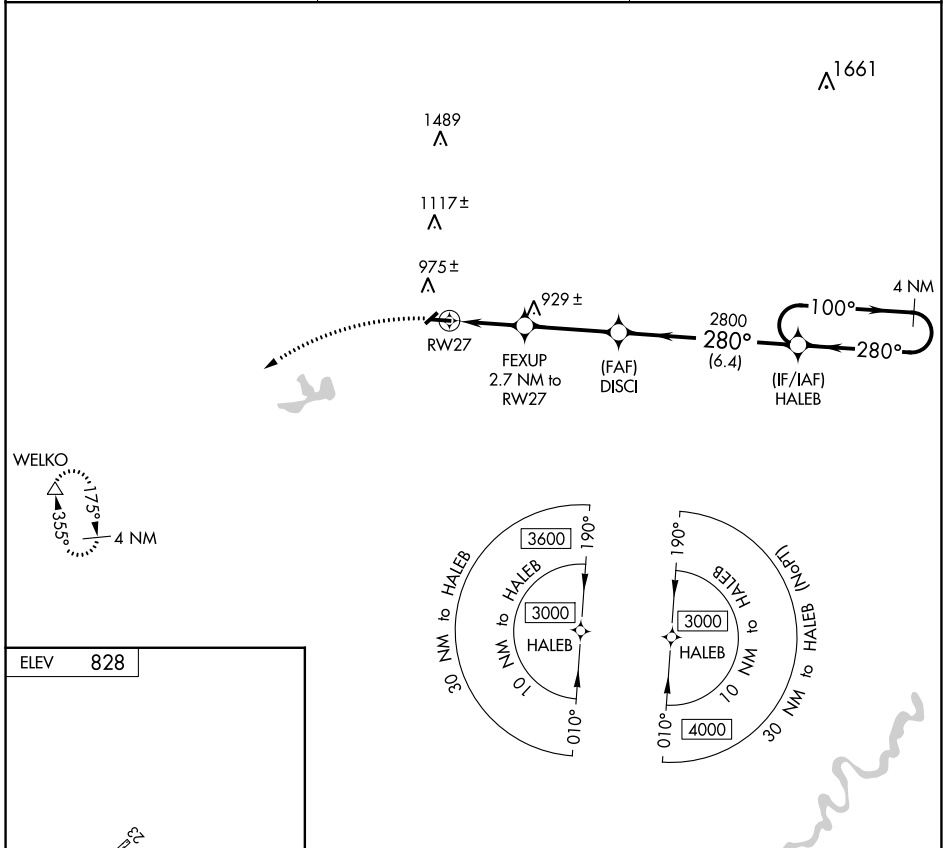
RNAV (GPS)-A

BALDWIN MUNI (7D3)

⚠ Circling NA to Rwy's 5 and 23. DME/DME RNP-0.3 NA.
⚠ NA Helicopter visibility reduction below 1 SM NA.
 Use Fremont Muni altimeter setting. Procedure NA at night.

MISSED APPROACH: Climbing left turn to 3600 direct WELKO and hold.

FFX AWOS-3 118.775	MINNEAPOLIS CENTER 120.85 322.35	CTAF 122.9
------------------------------	--	----------------------



CATEGORY	A	B	C	D
☑ CIRCLING	1400-1	572 (600-1)	1400-1½ 572 (600-1½)	NA

EC-1, 31 OCT 2024 to 28 NOV 2024

EC-1, 31 OCT 2024 to 28 NOV 2024