

WAAS CH <b>70437</b> <b>W28A</b>	APP CRS <b>276°</b>	Rwy Idg TDZE Apt Elev	<b>5002</b> <b>3142</b> <b>3178</b>
--	------------------------	-----------------------------	---

# RNAV (GPS) RWY 28

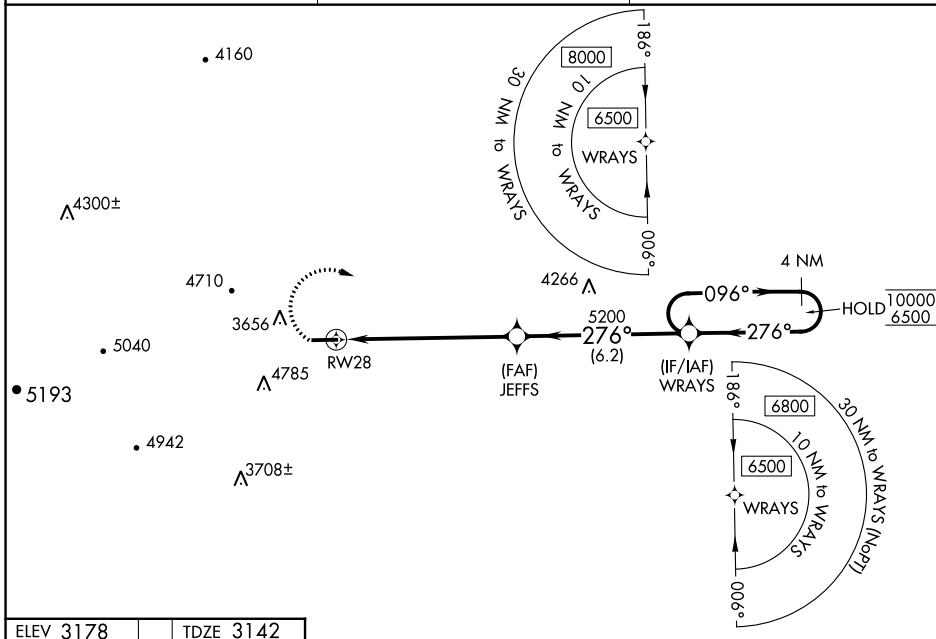
ASHE COUNTY (GEV)

RNP APCH - GPS.

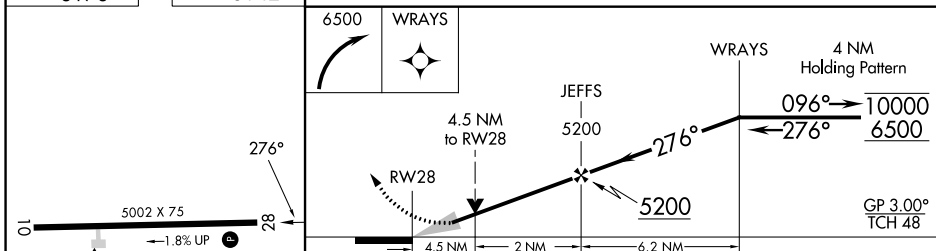
**⚠** Circling to Rwy 10 NA at night. For uncompensated Baro-VNAV systems, LNAV/VNAV NA below 14°C or above 54°C.  
**❄** -16°C

**MISSED APPROACH:** Climbing right turn to 6500 direct WRAYS and hold, continue climb-in-hold to 6500.  
 \*Missed approach requires minimum climb of 350 feet per NM to 5700.

AWOS-3 <b>120.675</b>	ATLANTA CENTER <b>125.15 263.0</b>	UNICOM <b>122.8 (CTAF) ①</b>
--------------------------	---------------------------------------	---------------------------------



ELEV 3178	TDZE 3142
-----------	-----------



CATEGORY	A	B	C	D
LPV DA*	3799-1 $\frac{1}{4}$		657 (700-1 $\frac{1}{2}$ )	
LPV DA	4052-4		910 (900-4)	
LNAV/VNAV DA	4024-4		882 (900-4)	
LNAV MDA	4560-1 $\frac{1}{4}$ 1418 (1400-1 $\frac{1}{4}$ )	4560-1 $\frac{1}{2}$ 1418 (1400-1 $\frac{1}{2}$ )	4560-3	1418 (1400-3)
<b>C</b> CIRCLING	4560-1 $\frac{1}{4}$ 1382 (1400-1 $\frac{1}{4}$ )	4560-1 $\frac{1}{2}$ 1382 (1400-1 $\frac{1}{2}$ )	5140-3 1962 (2000-3)	5180-3 2002 (2100-3)

REIL Rwy 28 ①  
 MIRL Rwy 10-28 ①

SE-2, 31 OCT 2024 to 28 NOV 2024

SE-2, 31 OCT 2024 to 28 NOV 2024