

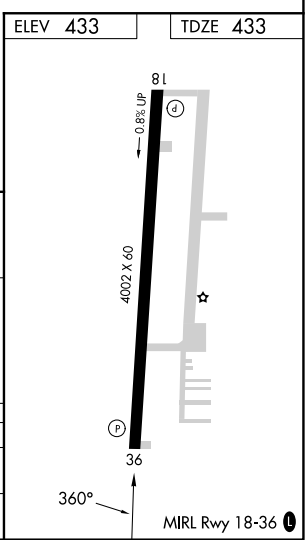
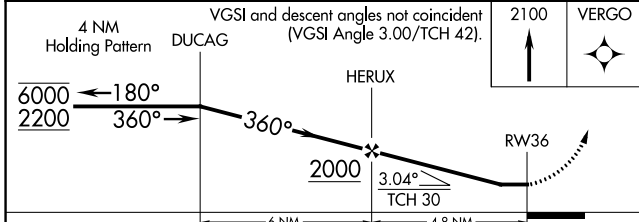
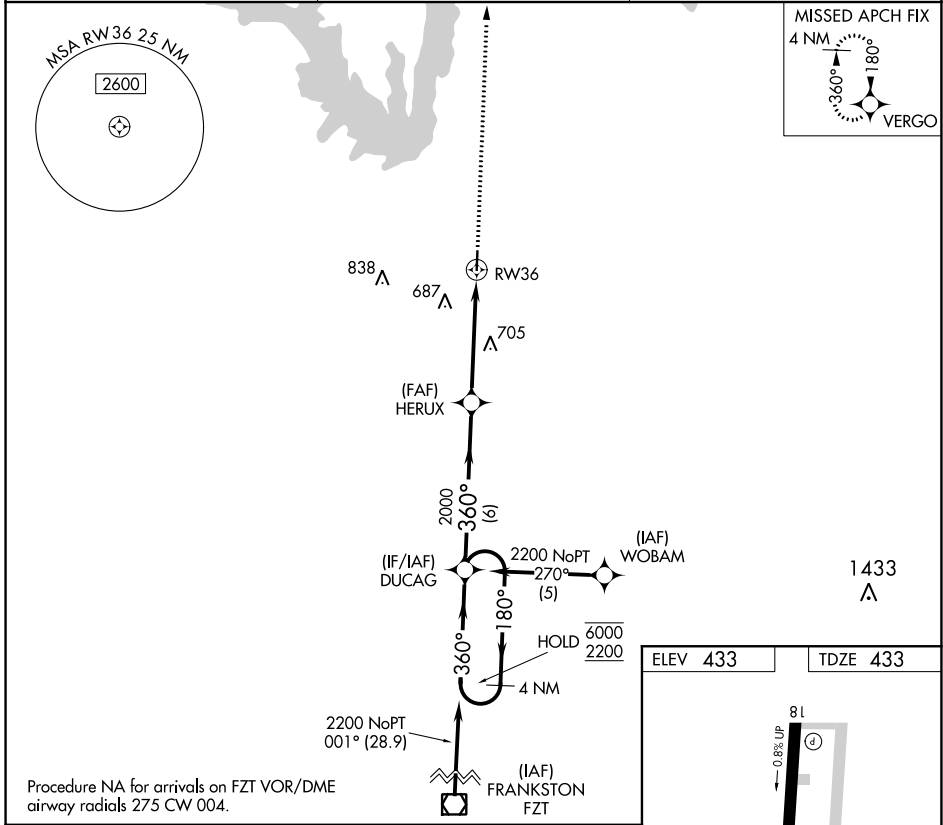
APP CRS	Rwy Idg	<b>4002</b>
<b>360°</b>	TDZE	<b>433</b>
	Apt Elev	<b>433</b>

# RNAV (GPS) RWY 36

WOOD COUNTY/COLLINS FLD (JDD)

RNP APCH.	MISSED APPROACH: Climb to 2100 direct VERGO and hold.
<p>▼ Rwy 36 helicopter visibility reduction below 1 SM NA.</p> <p>▲ Straight-in and Circling Rwy 36 NA at night.</p>	

AWOS-3 <b>118.9</b>	LONGVIEW APP CON ★ <b>128.75 379.15</b>	UNICOM <b>122.8 (CTAF)</b>
------------------------	--	-------------------------------



CATEGORY	A	B	C	D
LNVA MDA	960-1	527 (600-1)	960-1½ 527 (600-1½)	NA
CIRCLING	960-1 527 (600-1)	1000-1 567 (600-1)	1000-1½ 567 (600-1½)	NA

SC-2, 31 OCT 2024 to 28 NOV 2024

SC-2, 31 OCT 2024 to 28 NOV 2024