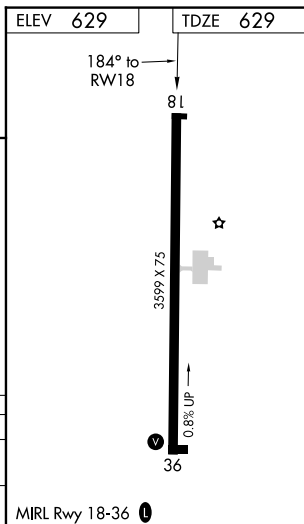
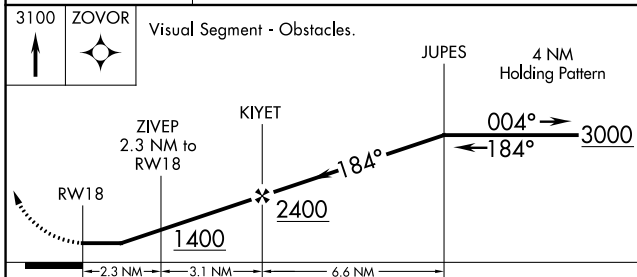
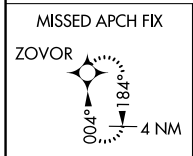
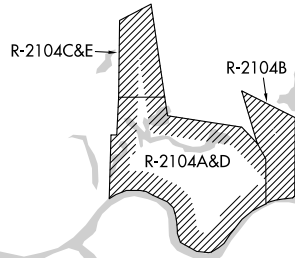
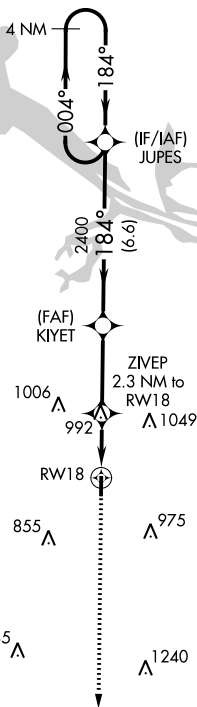
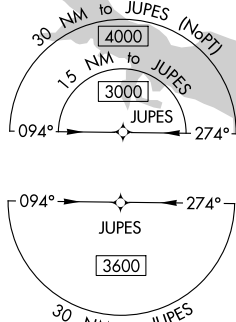


APP CRS **184°**  
 Rwy Idg **3599**  
 TDZE **629**  
 Apt Elev **629**

**RNAV (GPS) RWY 18**  
 HARTSELLE/MORGAN COUNTY RGNL (5M $\emptyset$ )

RNP APCH.  
 Procedure NA at night. Rwy 18 helicopter visibility reduction below 1 SM NA.  
 Use Huntsville Intl-Carl T Jones Fld altimeter setting; when not received, use Cullman altimeter setting and increase all MDA 40 feet.  
 MISSED APPROACH: Climb to 3100 direct ZOVOR and hold.

HSV ATIS **121.25**      HUNTSVILLE APP CON **118.05 239.0**      UNICOM **122.8 (CTAF)**



CATEGORY	A	B	C	D
LNVA MDA	1280-1	651 (700-1)	1280-1 $\frac{7}{8}$ 651 (700-1 $\frac{7}{8}$ )	NA
<b>C</b> CIRCLING	1280-1	651 (700-1)	1520-2 $\frac{3}{4}$ 891 (900-2 $\frac{3}{4}$ )	NA

MIRL Rwy 18-36 **Ⓢ**

SE-4, 31 OCT 2024 to 28 NOV 2024

SE-4, 31 OCT 2024 to 28 NOV 2024