

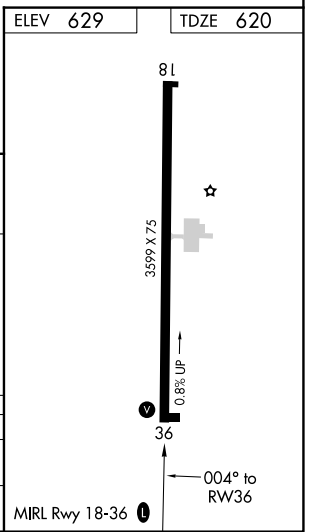
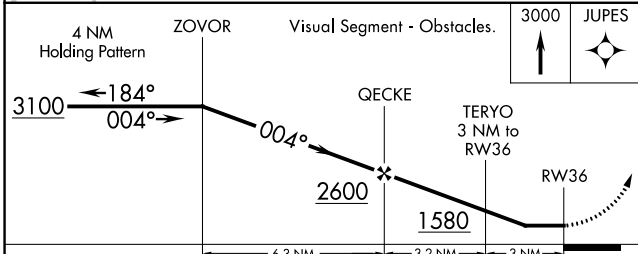
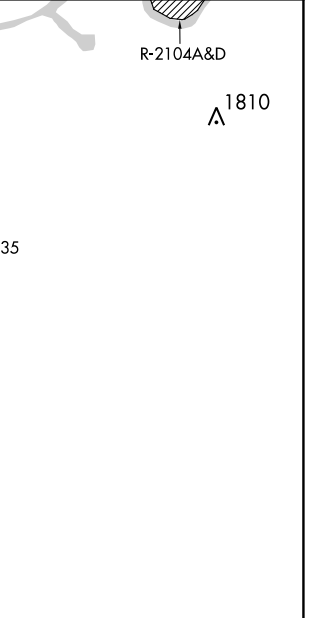
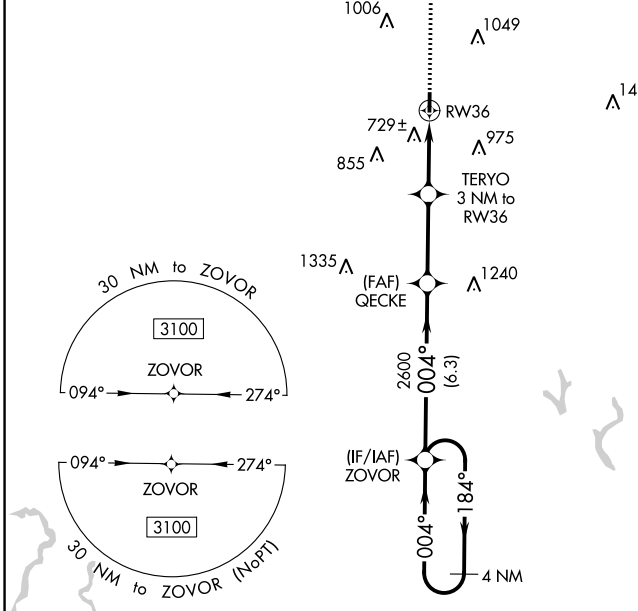
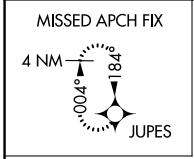
APP CRS **004°**  
 Rwy Idg **3599**  
 TDZE **620**  
 Apt Elev **629**

# RNAV (GPS) RWY 36

HARTSELLE/MORGAN COUNTY RGNL (5M $\emptyset$ )

RNP APCH. Procedure NA at night. Rwy 36 helicopter visibility reduction below 1 SM NA. Use Huntsville Intl-Carl T Jones Fld altimeter setting; when not received, use Cullman altimeter setting and increase all MDA 40 feet. MISSED APPROACH: Climb to 3000 direct JUPES and hold.

HSV ATIS **121.25**      HUNTSVILLE APP CON\* **118.05 239.0**      UNICOM **122.8 (CTAF)**



CATEGORY	A	B	C	D
LNVA MDA	1020-1	400 (400-1)	1020-1 $\frac{1}{8}$ 400 (400-1 $\frac{1}{8}$ )	NA
CIRCLING	1120-1 491 (500-1)	1260-1 631 (700-1)	1520-2 $\frac{3}{4}$ 891 (900-2 $\frac{3}{4}$ )	NA

SE-4, 31 OCT 2024 to 28 NOV 2024

SE-4, 31 OCT 2024 to 28 NOV 2024