

VOR/DME HPB	APP CRS	Rwy Idg	3300
115.2	313°	TDZE	20
Chan 99		Apt Elev	20

# VOR RWY 32

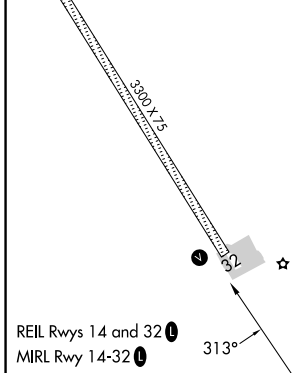
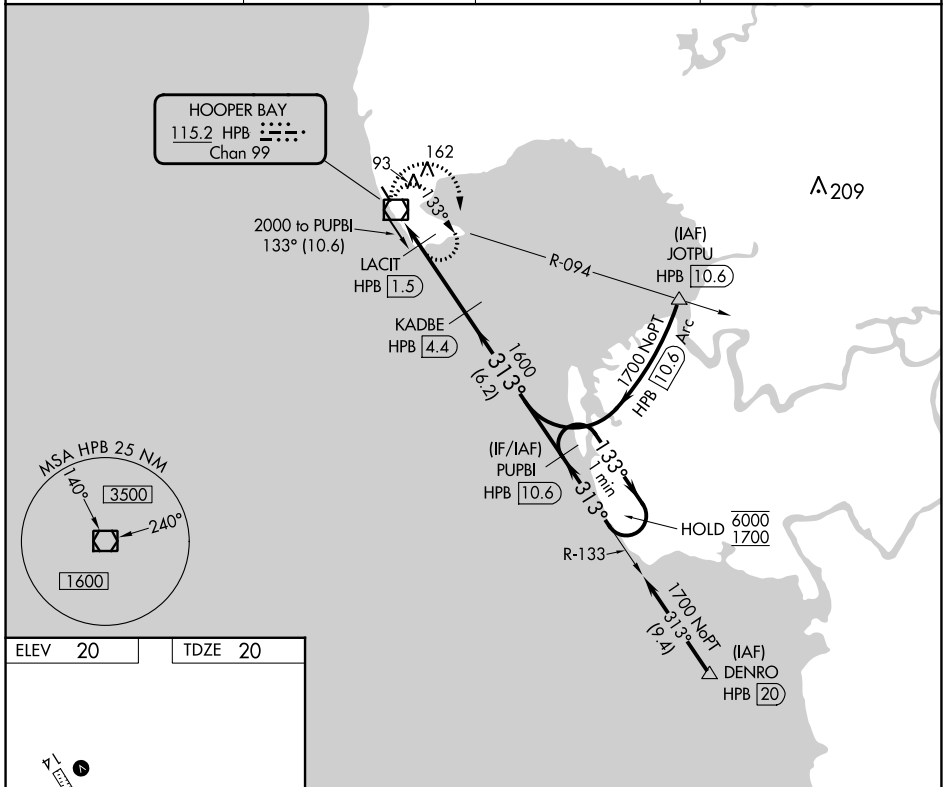
HOOPER BAY (HPB) (PAHP)

DME required.

▼ Rwy 32 helicopter visibility reduction below 1 SM NA.  
▲ Straight-in Rwy 32 NA at night, Circling Rwy 32 NA at night.

MISSED APPROACH: Climbing right turn to 2000 in HPB VOR/DME holding pattern.

AWOS-3P <b>135.1</b>	ANCHORAGE CENTER <b>124.5</b>	KENAI RADIO <b>122.4</b>	CTAF <b>123.0</b>
-------------------------	----------------------------------	-----------------------------	----------------------



2000 HPB	VGSi and descent angles not coincident (VGSi Angle 3.00/TCH 28).		PUPBI HPB 10.6	One Minute Holding Pattern
KADBE HPB 4.4	LACIT HPB 1.5	HPB VOR/DME	HPB 10.6	HPB 1700
$\leq 3.00^\circ$ TCH 45		1600	313°	6000
0.4	1.5 NM	2.9 NM	6.2 NM	
CATEGORY	A	B	C	D
S-32	420-1	400 (400-1)	420-1 $\frac{1}{8}$	400 (400-1 $\frac{1}{8}$ )
<input checked="" type="checkbox"/> CIRCLING	420-1	480-1	480-1 $\frac{1}{2}$	580-2
	400 (400-1)	460 (500-1)	460 (500-1 $\frac{1}{2}$ )	560 (600-2)

AK, 31 OCT 2024 to 26 DEC 2024

AK, 31 OCT 2024 to 26 DEC 2024