

APP CRS	Rwy Idg	N/A
148°	TDZE	N/A
	Apt Elev	2605

GPS-A  
LIBBY (S59)

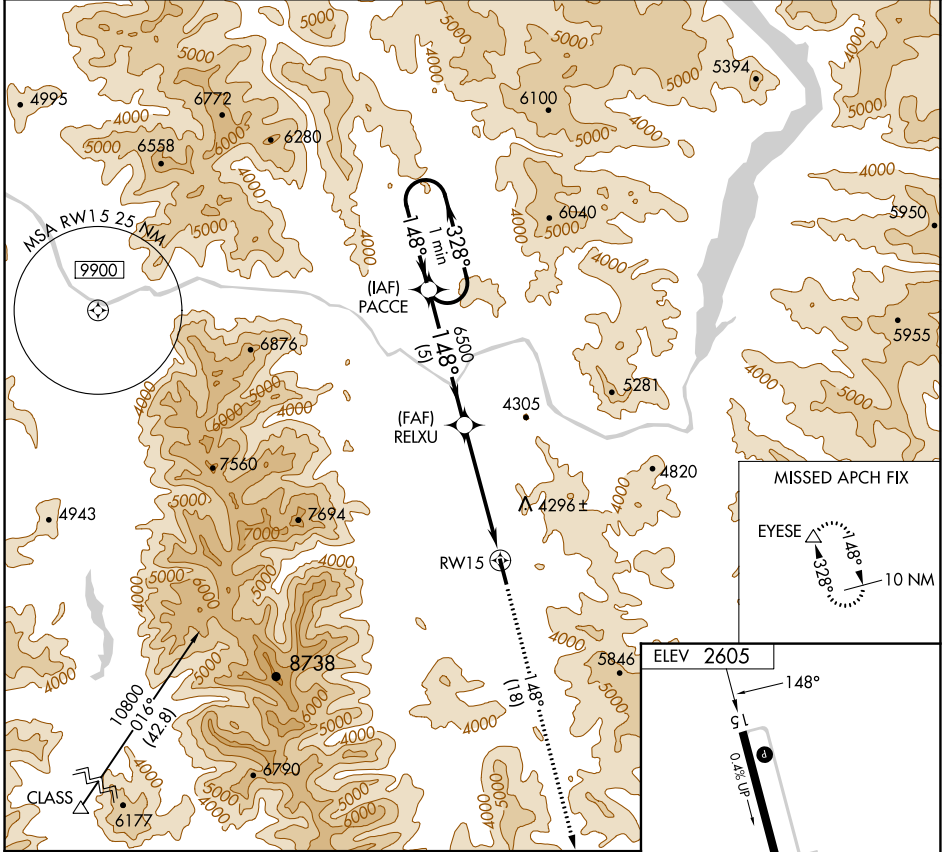
Procedure NA at night. Rwy 15, 33 helicopter visibility reduction below 1 SM NA. When local altimeter setting not received, procedure NA.

MISSED APPROACH: Climb to 9600 on 148° course to EYESE and hold.

AWOS-A  
118.575

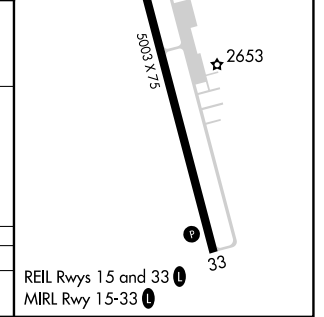
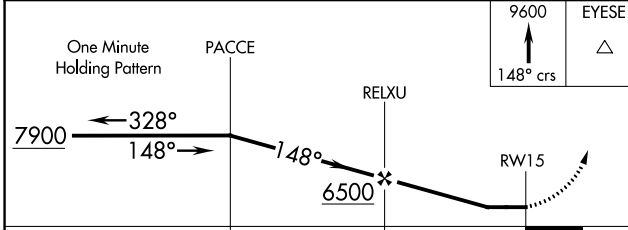
SEATTLE CENTER  
123.95 290.55

UNICOM  
122.8 (CTAF) **0**



NW-1, 31 OCT 2024 to 28 NOV 2024

NW-1, 31 OCT 2024 to 28 NOV 2024



CATEGORY	A	B	C	D
CIRCLING	5240-1¼ 2635 (2700-1¼)	5240-1½ 2635 (2700-1½)	NA	

REIL Rwy 15 and 33 **0**  
MIRL Rwy 15-33 **0**