

(CROL1.CROL1) 18312

# CROL1 ONE DEPARTURE (RNAV)

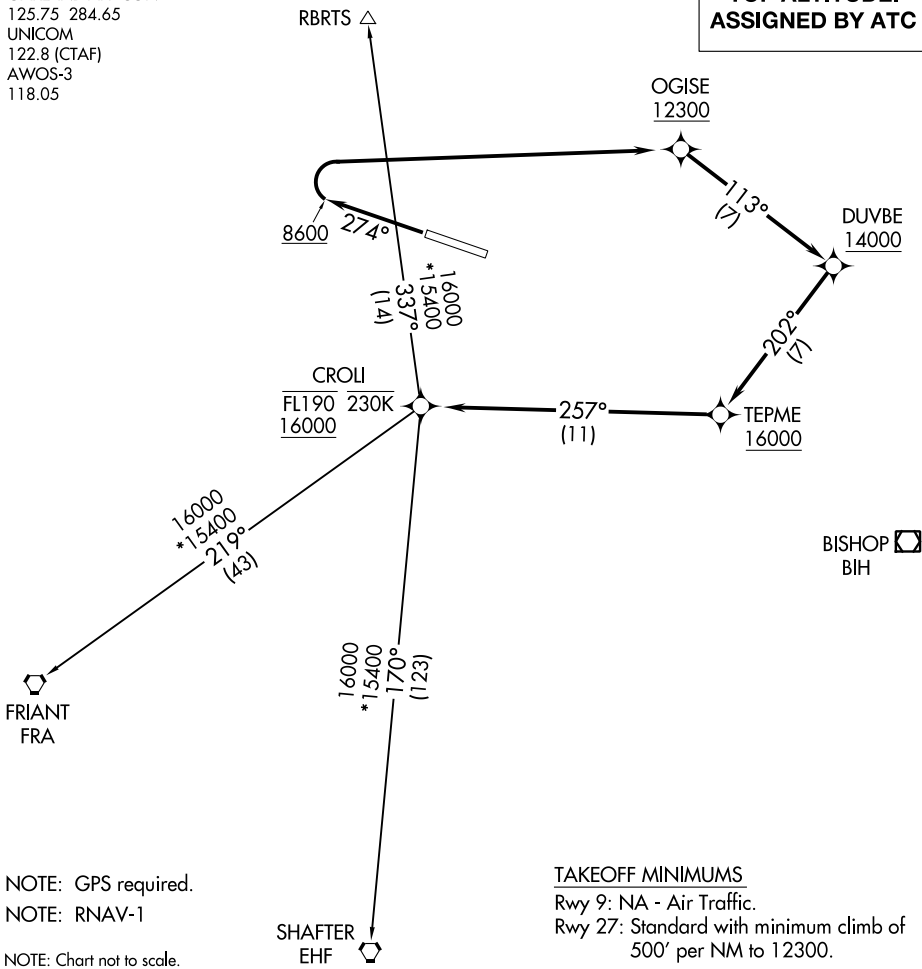
AL-6841 (FAA)

MAMMOTH YOSEMITE (MMH)

MAMMOTH LAKES, CALIFORNIA

OAKLAND APP CON  
125.75 284.65  
UNICOM  
122.8 (CTAF)  
AWOS-3  
118.05

**TOP ALTITUDE:  
ASSIGNED BY ATC**



NOTE: GPS required.

NOTE: RNAV-1

NOTE: Chart not to scale.

### TAKEOFF MINIMUMS

Rwy 9: NA - Air Traffic.

Rwy 27: Standard with minimum climb of 500' per NM to 12300.

### DEPARTURE ROUTE DESCRIPTION

**TAKEOFF RUNWAY 27:** Climb heading 274° to 8600, then right turn direct to cross OGISE at or above 12300, then on track 113° to cross DUVBE at or above 14000, then on track 202° to cross TEPME at or above 16000, then on track 257° to cross CROL1 at or above 16000 and at or below FL190, thence. . . .

. . . .on (transition) maintain 16000, expect filed altitude 10 minutes after departure.

SHAFTER TRANSITION (CROL1 .EHF)

FRIANT TRANSITION (CROL1 .FRA)

RBRTS TRANSITION (CROL1 .RBRTS)

# CROL1 ONE DEPARTURE (RNAV)

(CROL1.CROL1) 05MAR15

MAMMOTH LAKES, CALIFORNIA  
MAMMOTH YOSEMITE (MMH)

SW-2, 31 OCT 2024 to 28 NOV 2024

SW-2, 31 OCT 2024 to 28 NOV 2024