

METTER, GEORGIA

AL-6844 (FAA)

21280

WAAS CH 78438 W28A	APP CRS 280°	Rwy Idg TDZE Apt Elev	5001 197 197
--	------------------------	-----------------------------	---

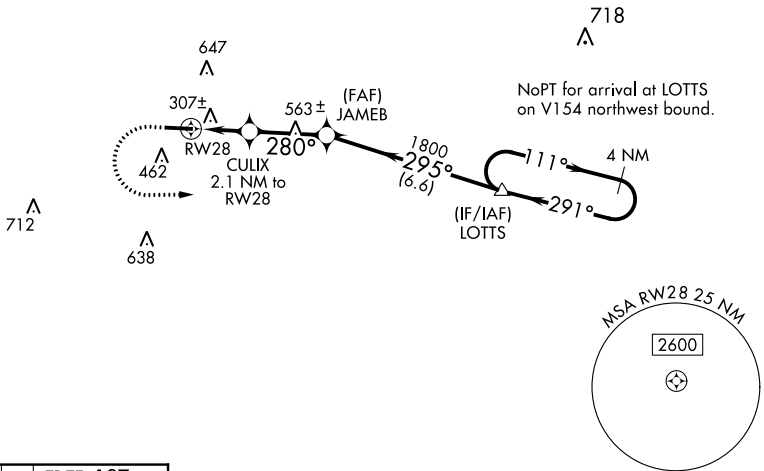
RNAV (GPS) RWY 28

JOHN EDWIN JONES SR FLD/METTER MUNI (MHP)

Baro-VNAV NA. DME/DME RNP-0.3 NA. Helicopter visibility reduction below 1 SM NA. Use Claxton altimeter setting; when not received, use Vidalia altimeter setting and increase LPV DA to 500, LNAV/VNAV DA to 533, increase all MDA 20 feet, increase LNAV/VNAV all Cats and LNAV Cat C/D visibility 1/8 mile and Circling Cat C/D visibility 1/4 mile.

MISSED APPROACH: Climb to 700 then climbing left turn to 3000 direct LOTTS and hold.

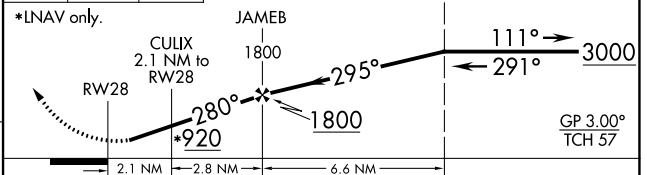
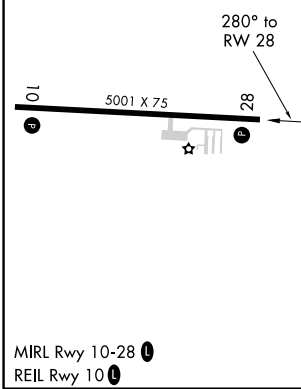
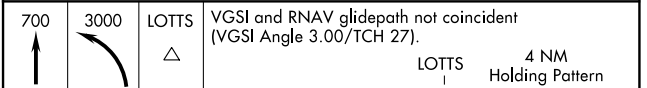
AWOS-3PT 120.3	CWV AWOS-3 120.075	JACKSONVILLE CENTER 132.925 363.2	UNICOM 123.0 (CTAF) 0
--------------------------	------------------------------	---	---------------------------------



SE-4, 31 OCT 2024 to 28 NOV 2024

SE-4, 31 OCT 2024 to 28 NOV 2024

ELEV 197	TDZE 197
-----------------	-----------------



CATEGORY	A	B	C	D
LPV DA	494-1 297 (300-1)			
LNAV/VNAV DA	527-1 330 (400-1)			
LNAV MDA	620-1 423 (500-1)		620-1¼ 423 (500-1¼)	
C CIRCLING	820-1 623 (700-1)	880-1 683 (700-1)	1060-2½ 863 (900-2½)	1060-2¾ 863 (900-2¾)

METTER, GEORGIA
Amdt 1 26MAY16

JOHN EDWIN JONES SR FLD/METTER MUNI (MHP)
32°22'N-82°05'W
RNAV (GPS) RWY 28