

COLUMBUS, OHIO

AL-6846 (FAA)

23054

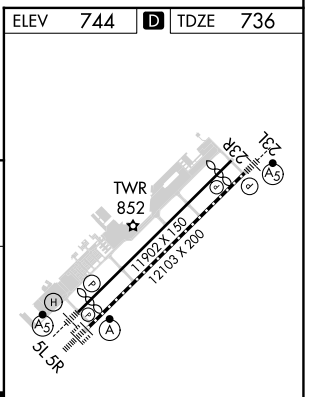
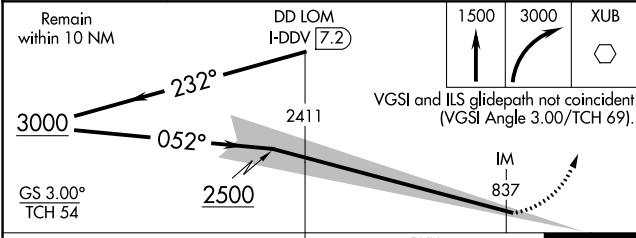
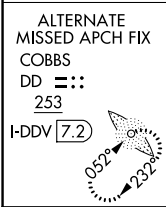
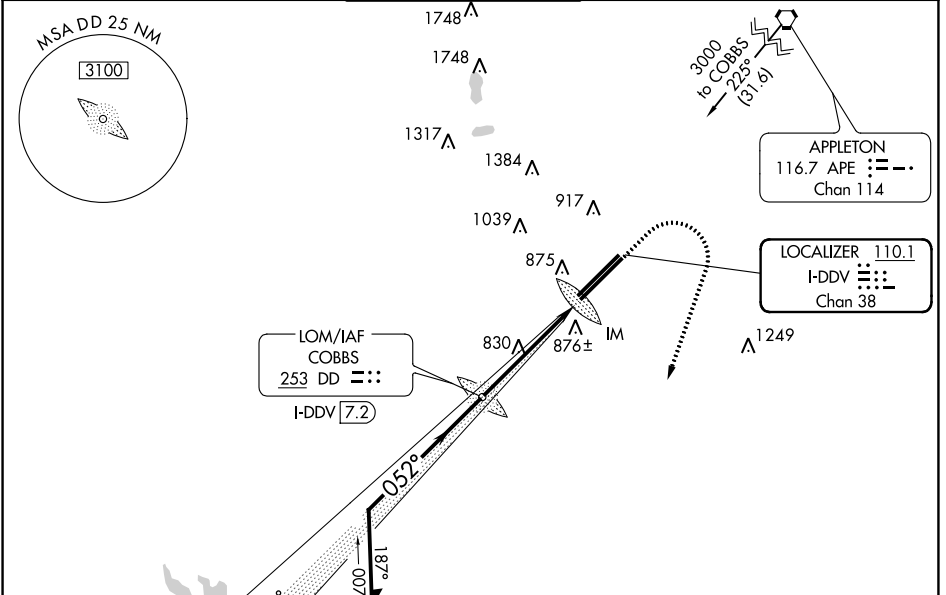
LOC/DME I-DDV 110.1 Chan 38	APP CRS 052°	Rwy Idg 12103 TDZE 736 Apt Elev 744
---	------------------------	--

ILS RWY 5R (CAT II)

RICKENBACKER INTL (LCK)

ADF or DME required. NA	ALSIF-2 	MISSED APPROACH: Climb to 1500 then climbing right turn to 3000 direct XUB VOR and hold.
-----------------------------------	-------------	--

ATIS 132.75	COLUMBUS APP CON 134.0 279.6	RICK TOWER 120.05 348.4	GND CON 125.275 275.8	CLNC DEL 125.275 275.8
-----------------------	--	-----------------------------------	---------------------------------	----------------------------------



CATEGORY	A	B	C	D
S-ILS 5R	RA 100/12 100 DA 836			
CATEGORY II ILS - SPECIAL AIRCREW & AIRCRAFT CERTIFICATION REQUIRED				

TDZ/CL Rwy 5R
REIL Rwy 23R
HIRL Rwys 5L-23R and 5R-23L

EC-2, 31 OCT 2024 to 28 NOV 2024

EC-2, 31 OCT 2024 to 28 NOV 2024

COLUMBUS, OHIO
Amdt 3E 09SEP21

39°49'N-82°56'W

RICKENBACKER INTL (LCK)
ILS RWY 5R (CAT II)