

LOC/DME I-FQS <b>110.55</b> Chan 42 (Y)	APP CRS <b>052°</b>	Rwy Idg <b>11004</b> TDZE <b>744</b> Apt Elev <b>744</b>
---	------------------------	--

# ILS or LOC RWY 5L

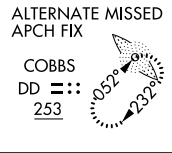
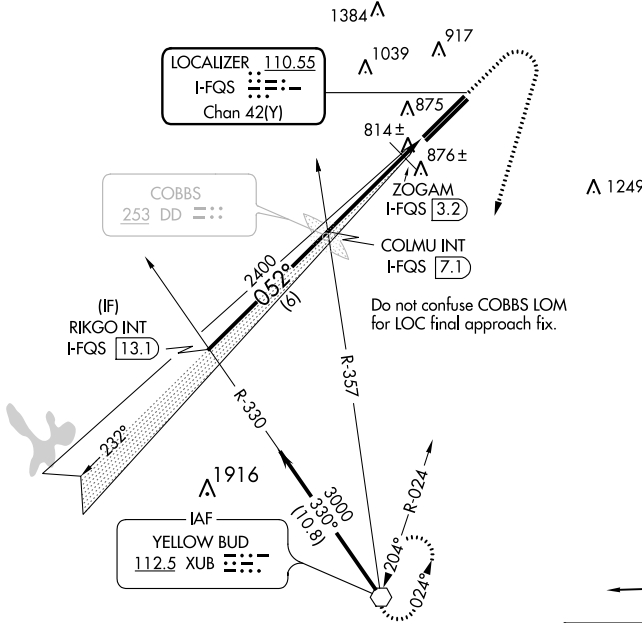
RICKENBACKER INTL (LCK)

**⚠** Circling NA northwest of Rwy 5L-23R. When local altimeter setting not received, use John Glenn Columbus Intl altimeter setting and increase DA to 979 feet; increase all MDAs 40 feet and S-LOC 5L Cat C, Circling Cat D ¼ SM; increase ZOGAM fix minimums S-LOC 5L Cats C/D visibility ½ SM and Circling Cat D ¼ SM.



**MISSED APPROACH:** Climb to 1500 then climbing right turn to 3000 direct XUB VOR and hold.

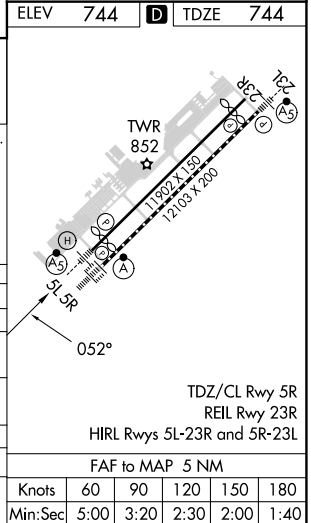
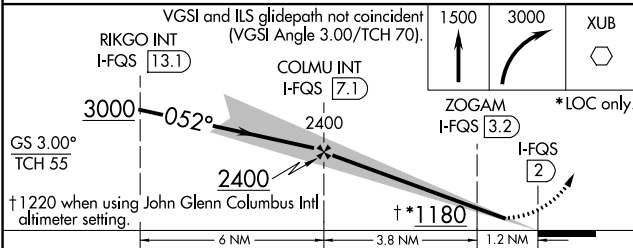
ATIS <b>132.75</b>	COLUMBUS APP CON <b>134.0 279.6</b>	RICK TOWER <b>120.05 348.4</b>	GND CON <b>125.275 275.8</b>	CLNC DEL <b>125.275 275.8</b>
-----------------------	--	-----------------------------------	---------------------------------	----------------------------------



EC-2, 31 OCT 2024 to 28 NOV 2024

EC-2, 31 OCT 2024 to 28 NOV 2024

ELEV 744	<b>D</b> TDZE 744
----------	-------------------



CATEGORY	A	B	C	D
S-ILS 5L	944-½		200 (200-½)	
S-LOC 5L	1180-½	436 (500-½)	1180-¾	436 (500-¾)
CIRCLING	1240-1	496 (500-1)	1280-1½	1400-2
ZOGAM FIX MINIMUMS				
S-LOC 5L	1080-½		336 (400-½)	
CIRCLING	1240-1	496 (500-1)	1280-1½	1400-2
			536 (600-1½)	656 (700-2)

FAF to MAP 5 NM					
Knots	60	90	120	150	180
Min:Sec	5:00	3:20	2:30	2:00	1:40