

APP CRS	Rwy Idg	<b>8600</b>
<b>258°</b>	TDZE	<b>270</b>
	Apt Elev	<b>270</b>

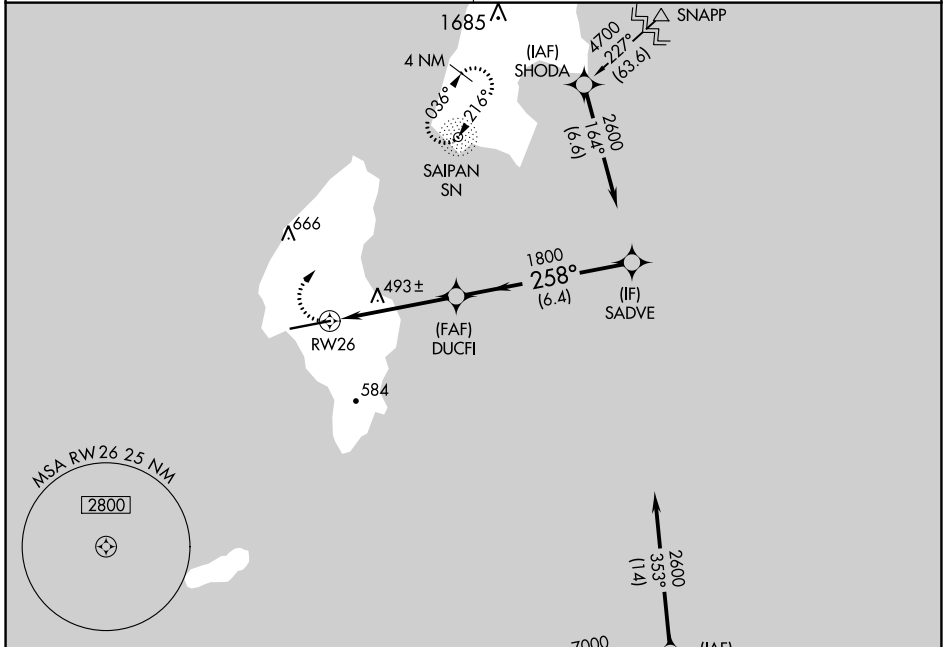
# RNAV (GPS) RWY 26

FRANCISCO MANGLONA BORJA/TINIAN INTL (TNI)(PGWT)

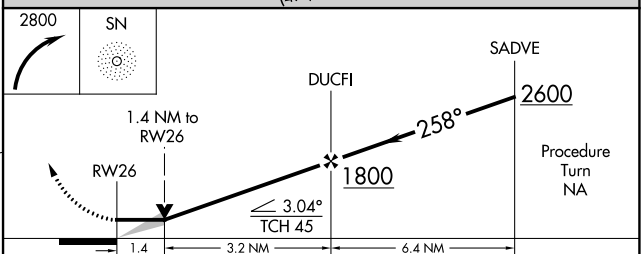
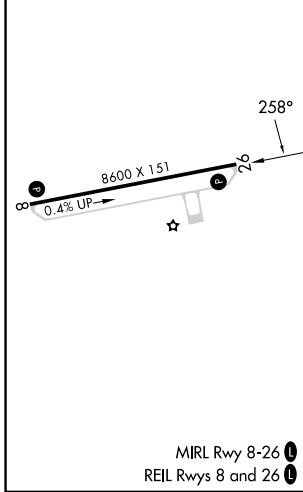
RNP APCH. **▽** Obtain local altimeter setting on CTAF; when not received, use Saipan altimeter setting. **▲** VDP NA when using Saipan altimeter setting.

MISSED APPROACH: Climbing right turn to 2800 direct SN NDB and hold, continue climb-in-hold to 2800.

GUAM CERAP **118.4 290.5** SAIPAN RADIO **123.6 (CTAF) 0**



ELEV	270	<b>D</b>	TDZE	270
------	-----	----------	------	-----



CATEGORY	A	B	C	D
LN AV MDA	760-1	490 (500-1)	760-1¼ 490 (500-1¼)	760-1½ 490 (500-1½)
<b>C</b> CIRCLING	760-1 490 (500-1)	860-1 590 (600-1)	1000-2 730 (800-2)	1060-2½ 790 (800-2½)
SAIPAN ALTIMETER SETTING MINIMUMS				
LN AV MDA	780-1	510 (600-1)	780-1½	510 (600-1½)
<b>C</b> CIRCLING	800-1 530 (600-1)	900-1 630 (700-1)	1040-2¼ 770 (800-2¼)	1100-2¾ 830 (900-2¾)

MIRL Rwy 8-26 **0**  
REIL Rwys 8 and 26 **0**

# RNAV (GPS) RWY 26

PAC, 31 OCT 2024 to 26 DEC 2024

PAC, 31 OCT 2024 to 26 DEC 2024