

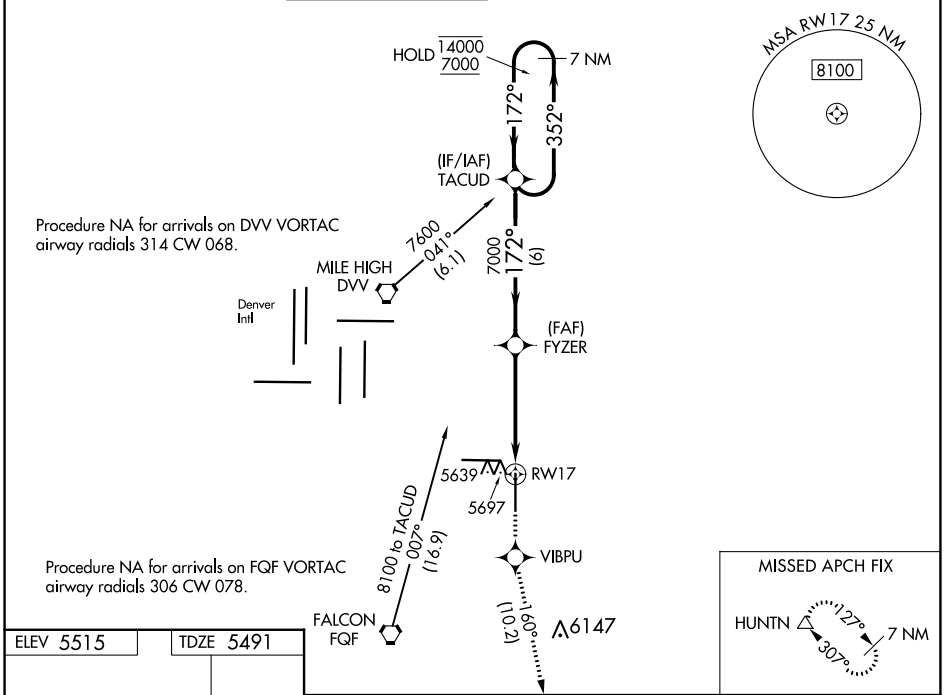
WAAS CH <b>82209</b> <b>W17A</b>	APP CRS <b>172°</b>	Rwy Idg TDZE Apt Elev	<b>8000</b> <b>5491</b> <b>5515</b>
--	------------------------	-----------------------------	---

# RNAV (GPS) RWY 17

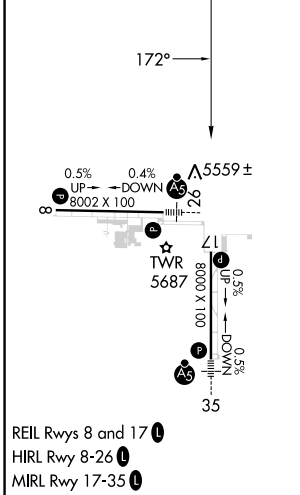
COLORADO AIR AND SPACE PORT (CFO)

RNP APCH-GPS.				MISSED APPROACH: Climb to 8500 direct VIBPU and on track 160° to HUNTN and hold.			
<p>▼ For uncompensated Baro-VNAV systems, LNAV/VNAV NA below -25°C or above 48°C.</p>							

ATIS <b>119.025</b>	DENVER APP CON <b>128.25 371.95</b>	SPACE PORT TOWER* <b>120.2 (CTAF) 0</b>	GND CON <b>124.7</b>	CLNC DEL <b>124.7</b>	CLNC DEL <b>121.75</b> (When twr closed)	UNICOM <b>122.95</b>
------------------------	--	--	-------------------------	--------------------------	--	-------------------------



ELEV 5515	TDZE 5491
-----------	-----------



7 NM Holding Pattern	TACUD	FYZER	7000	8500	VIBPU	tr 160°	HUNTN
14000 ← 352°	7000 → 172°	7000					
GP 3.00°	TCH 55						
6 NM	3.1 NM	1.5 NM					
CATEGORY	A	B	C	D			
LPV DA	5691-3/4 200 (200-3/4)						
LNAV/VNAV DA	5916-1 3/8 425 (500-1 3/8)						
LNAV MDA	6000-1	509 (500-1)	6000-1 1/2	509 (500-1 1/2)			
CIRCLING	6000-1	485 (500-1)	6100-1 1/2	585 (600-1 1/2)	6300-2 1/2	785 (800-2 1/2)	

SW-1, 31 OCT 2024 to 28 NOV 2024

SW-1, 31 OCT 2024 to 28 NOV 2024