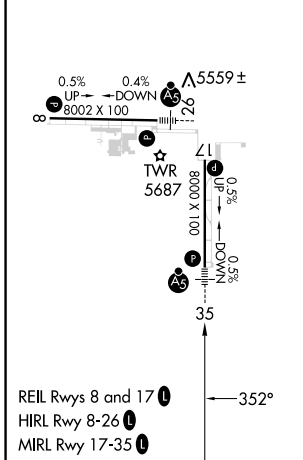
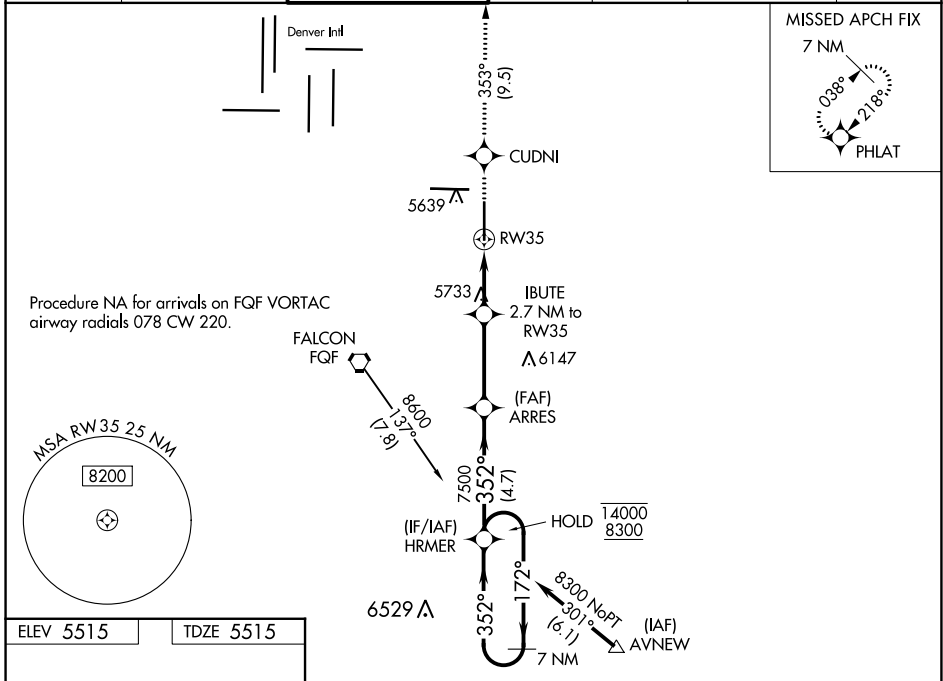


|  |                        |                             |   |
|--|------------------------|-----------------------------|---|
| WAAS<br>CH <b>93809</b><br><b>W35A</b> | APP CRS<br><b>352°</b> | Rwy Idg<br>TDZE<br>Apt Elev | <b>8000</b><br><b>5515</b><br><b>5515</b> |
|--|------------------------|-----------------------------|---|

# RNAV (GPS) RWY 35

COLORADO AIR AND SPACE PORT (CFO)

|   |  |  |  |                          |  |                         |
|---|--|--|--|--------------------------|--|-------------------------|
| RNP APCH.<br>⚠ For uncompensated Baro-VNAV systems, LNAV/VNAV NA below -25°C or above 46°C. For inop ALS, increase LNAV/VNAV all Cats visibility to 3/8 SM. |  | MALSR<br>                                | MISSED APPROACH: Climb to 8000 direct CUDNI and on track 353° to PHLAT and hold. |                          |  |                         |
| ATIS<br><b>119.025</b>  | DENVER APP CON<br><b>128.25 371.95</b> | SPACE PORT TOWER*<br><b>120.2 (CTAF)</b> | GND CON<br><b>124.7</b>  | CLNC DEL<br><b>124.7</b> | CLNC DEL<br><b>121.75</b><br>(When twr closed) | UNICOM<br><b>122.95</b> |



|  |                        |                      |   |                             |
|--|------------------------|----------------------|---|-----------------------------|
| 8000   | CUDNI                  | PHLAT                | HRMER   | 7 NM Holding Pattern        |
|  | tr 353°                |                      |   |                             |
| *LNAV only                                   |                        | IBUTE 2.7 NM to RW35 | ARRES 7500  | 172° → 14000<br>← 352° 8300 |
|  | *1.5 NM to RW35        | 6420*                | 7500  | GP 3.00°<br>TCH 54          |
|  | 1.5 NM                 | 1.2 NM               | 3.4 NM  | 4.7 NM                      |
| CATEGORY                                     | A                      | B                    | C   | D                           |
| LPV DA                                       | 5715-1/2               |                      | 200 (200-1/2)   |                             |
| LNAV/VNAV DA                                 | 5783-1/2               |                      | 268 (300-1/2)   |                             |
| LNAV MDA                                     | 6040-1/2 525 (600-1/2) |                      | 6040-1 525 (600-1)                                    |                             |
| <input checked="" type="checkbox"/> CIRCLING | 6040-1 525 (600-1)     |                      | 6100-1 1/2 585 (600-1 1/2) 6300-2 1/2 785 (800-2 1/2) |                             |