


WAAS CH 77905 W23A	APP CRS 234°	Rwy Idg TDZE Apt Elev	7300 7143 7143
--	------------------------	-----------------------------	---

RNAV (GPS) RWY 23

EVANSTON-UINTA COUNTY BURNS FLD (E V W)

RNP APCH - GPS.

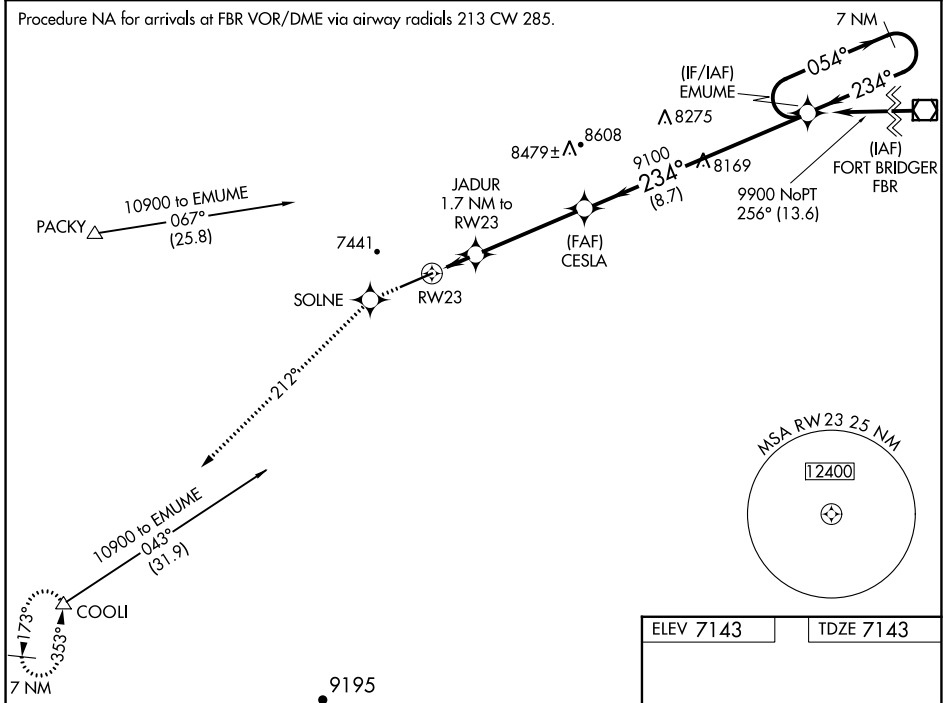
⚠ For inoperative MALS/R, increase LPV all Cats visibility to 1, LNAV/VNAV Cat D to 1 and LNAV Cat D to 1¼. When local altimeter setting not received, procedure NA. For uncompensated Baro-VNAV systems, LNAV/VNAV NA below -29°C or above 34°C.

MALS/R 

MISSED APPROACH: Climb to 12000 direct SOLNE and via 212° track to COOLI and hold, continue climb-in-hold to 12000.

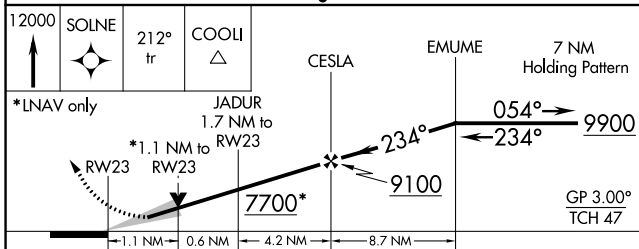
ASOS 120.0	SALT LAKE CENTER 127.7 354.125	GCO 121.72	UNICOM 123.0 (CTAF) 
----------------------	--	----------------------	---

Procedure NA for arrivals at FBR VOR/DME via airway radials 213 CW 285.

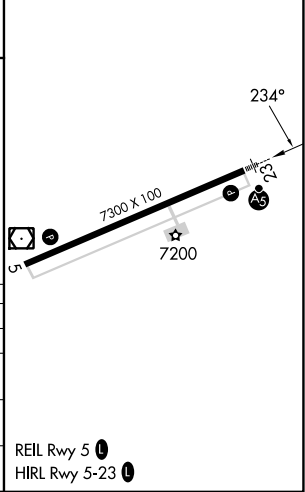


NW-1, 31 OCT 2024 to 28 NOV 2024


NW-1, 31 OCT 2024 to 28 NOV 2024



ELEV 7143	TDZE 7143
-----------	-----------



CATEGORY	A	B	C	D
LPV DA	7393-½ 250 (300-½)			
LNAV/VNAV DA	7443-½ 300 (300-½)		7443-¾ 300 (300-¾)	
LNAV MDA	7520-½ 377 (400-½)		7520-1 377 (400-1)	
CIRCLING	7680-1 537 (600-1)	7760-1 617 (700-1)	7800-1¾ 657 (700-1¾)	8000-2¾ 857 (900-2¾)

REIL Rwy 5 
HIRL Rwy 5-23 