

WAAS CH <b>86937</b> <b>W18A</b>	APP CRS <b>183°</b>	Rwy Idg TDZE Apt Elev	<b>5999</b> <b>654</b> <b>654</b>
--	------------------------	-----------------------------	---

# RNAV (GPS) RWY 18

ILLINOIS VALLEY RGNL-WALTER A DUNCAN FLD (VYS)

RNP APCH - GPS.

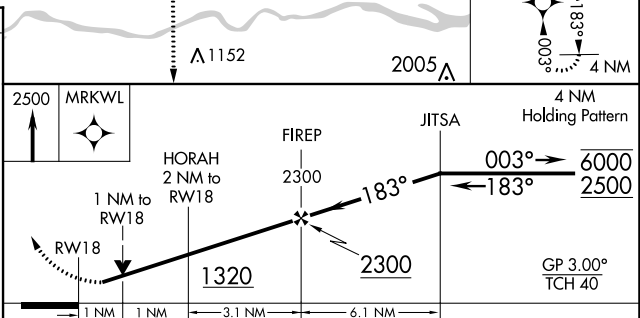
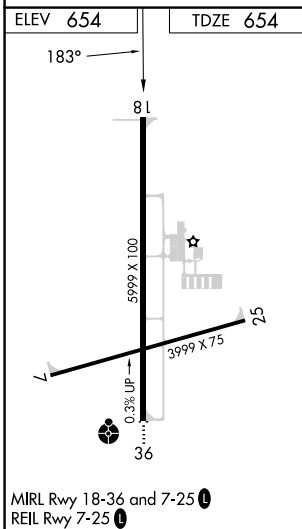
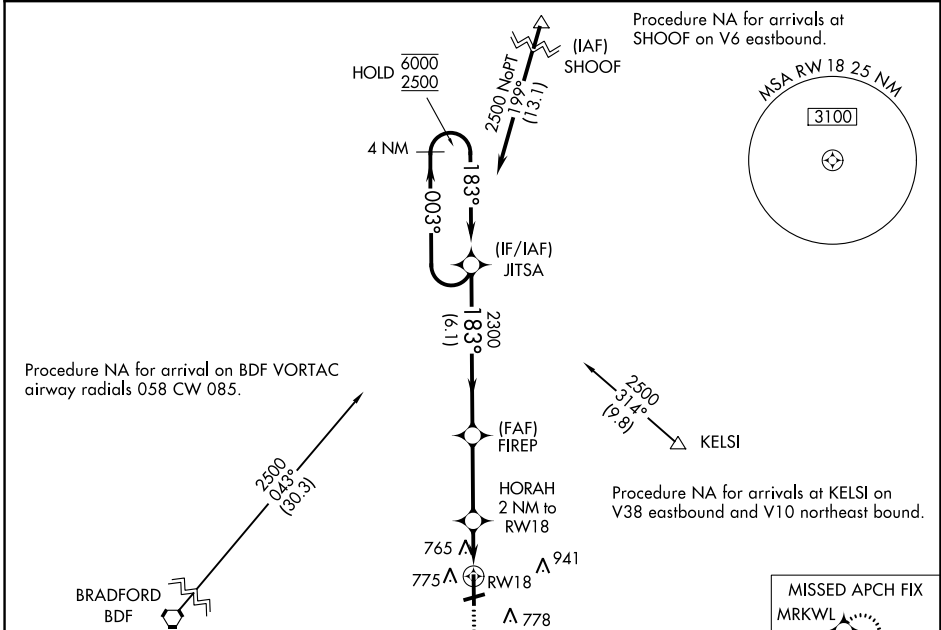
**▼** Rwy 18 helicopter visibility reduction below  $\frac{3}{4}$  SM NA.  
**▲** For uncompensated Baro-VNAV systems, LNAV/VNAV NA below -16°C or above 54°C.

MISSED APPROACH: Climb to 2500 direct MRKWL and hold.

AWOS-3  
**120.025**

CHICAGO CENTER  
**123.75 259.1**

UNICOM  
**123.0 (CTAF) 0**



CATEGORY	A	B	C	D
LPV DA		939-1	285 (300-1)	
LNAV/VNAV DA		926-1	272 (300-1)	
LNAV MDA		1020-1	366 (400-1)	
<b>C</b> CIRCLING	1120-1 466 (500-1)	1240-1 586 (600-1)	1260-1 $\frac{3}{4}$ 606 (700-1 $\frac{3}{4}$ )	1460-2 $\frac{1}{2}$ 806 (900-2 $\frac{1}{2}$ )

EC-3, 31 OCT 2024 to 28 NOV 2024

EC-3, 31 OCT 2024 to 28 NOV 2024