

WAAS CH <b>82037</b> <b>W36A</b>	APP CRS <b>003°</b>	Rwy Idg TDZE <b>650</b> Apt Elev <b>654</b>	<b>5999</b>
--	------------------------	---	-------------

# RNAV (GPS) RWY 36

ILLINOIS VALLEY RGNL-WALTER A DUNCAN FLD (VYS)

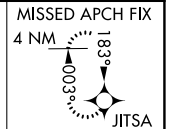
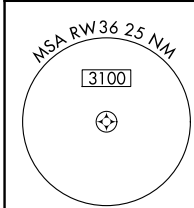
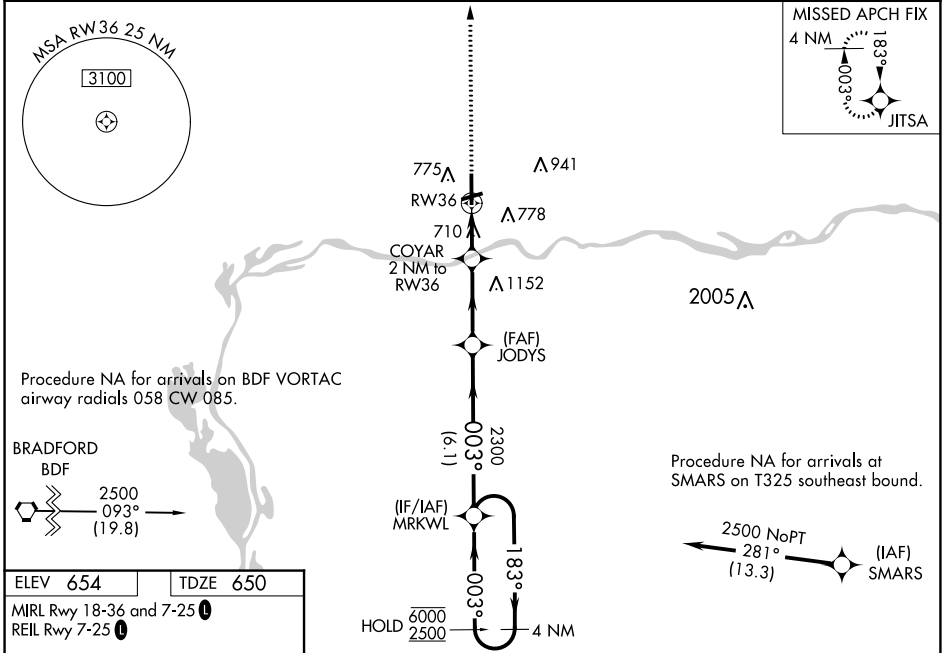
RNP APCH - GPS.

**⚠** Inop table does not apply.  
**⚠** For uncompensated Baro-VNAV systems, LNAV/VNAV NA below -16°C or above 54°C.

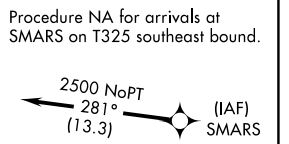
ODALS

MISSED APPROACH: Climb to 2500 direct JITSA and hold.

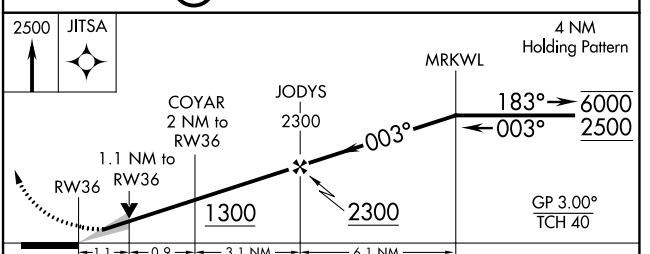
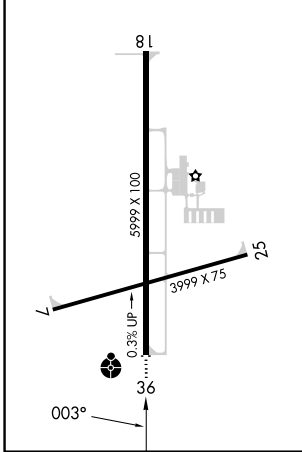
AWOS-3 <b>120.025</b>	CHICAGO CENTER <b>123.75 259.1</b>	UNICOM <b>123.0 (CTAF)</b>
--------------------------	---------------------------------------	-------------------------------



Procedure NA for arrivals on BDF VORTAC airway radials 058 CW 085.



ELEV <b>654</b>	TDZE <b>650</b>
MIRL Rwy 18-36 and 7-25	REIL Rwy 7-25



CATEGORY	A	B	C	D
LPV DA		900-1	250 (300-1)	
LNAV/VNAV DA		900-1	250 (300-1)	
LNAV MDA		1020-1	370 (400-1)	
<b>C</b> CIRCLING	1120-1 466 (500-1)	1240-1 586 (600-1)	1260-1¾ 606 (700-1¾)	1460-2½ 806 (900-2½)

EC-3, 31 OCT 2024 to 28 NOV 2024

EC-3, 31 OCT 2024 to 28 NOV 2024