

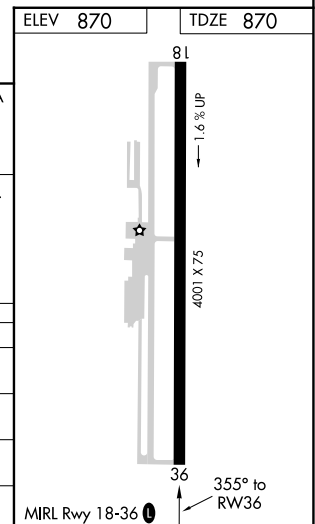
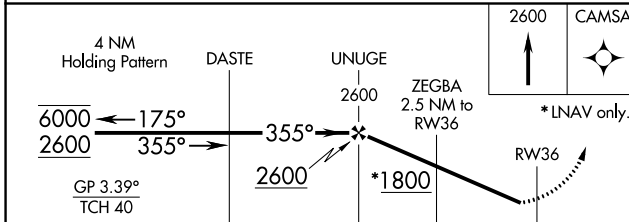
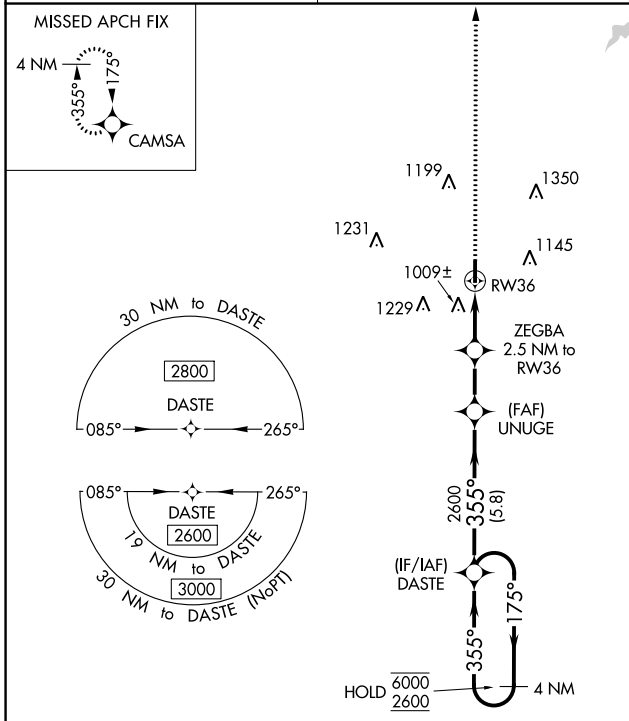
WAAS CH <b>72843</b> <b>W36A</b>	APP CRS <b>355°</b>	Rwy ldg TDZE <b>870</b> Apt Elev <b>870</b>	<b>4001</b>
--	------------------------	---	-------------

# RNAV (GPS) RWY 36

JONES MEML (3F7)

RNP APCH. ▼ Rwy 36 helicopter visibility reduction below 3/4 SM NA. ▲ NA Baro-VNAV NA. Use Cushing altimeter setting.	MISSED APPROACH: Climb to 2600 direct CAMSA and hold.
---	---

CUH AWOS-3 <b>118.25</b>	KANSAS CITY CENTER <b>127.8 319.1</b>	CTAF <b>122.9</b>
-----------------------------	--	----------------------



CATEGORY	A	B	C	D
LPV DA	1225-1	355 (400-1)		NA
LNAV/VNAV DA	1367-1 <sup>3/8</sup>	497 (500-1 <sup>3/8</sup> )		NA
LNAV MDA	1320-1	450 (500-1)	1320-1 <sup>3/8</sup> 450 (500-1 <sup>3/8</sup> )	NA
CIRCLING	1380-1 510 (600-1)	1500-1 630 (700-1)	1600-2 730 (800-2)	NA

SC-1, 31 OCT 2024 to 28 NOV 2024

SC-1, 31 OCT 2024 to 28 NOV 2024