

LOC/DME I-JWN 110.3 Chan 40	APP CRS 198°	Rwy Idg TDZE Apt Elev	6001 501 501
---	------------------------	-----------------------------	---

ILS or LOC RWY 20

JOHN C TUNE (JWN)

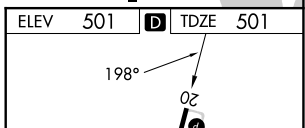
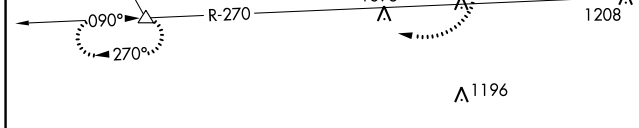
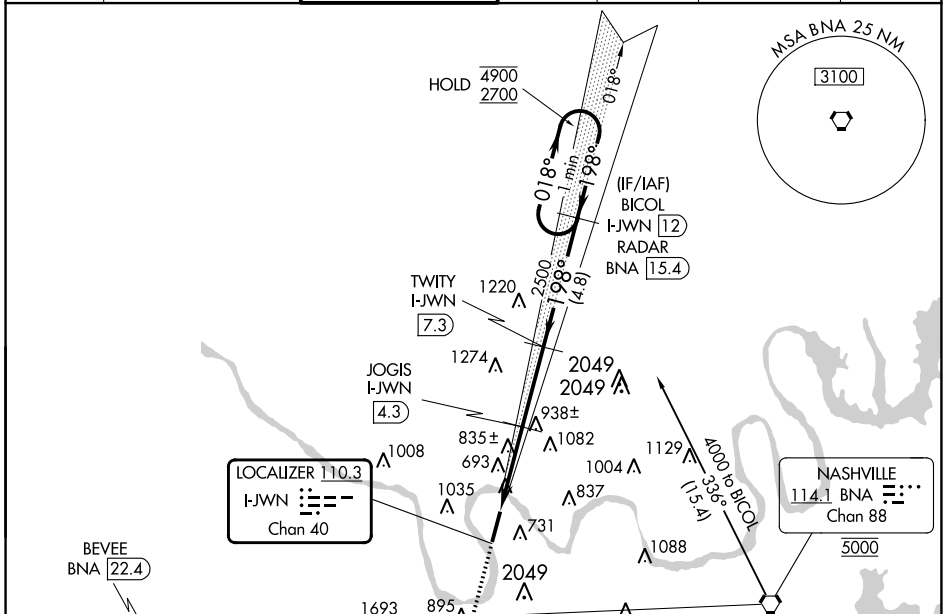
DME required.

V Circling NA east of Rwy 2-20. VDP NA when using Nashville Intl altimeter setting.

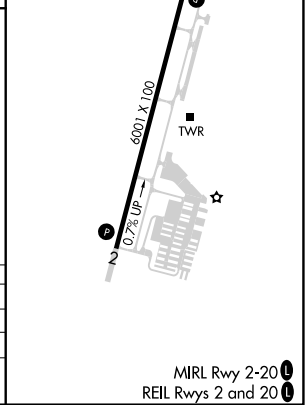
Δ NA When local altimeter setting not received, use Nashville Intl altimeter setting and increase S-ILS 20 DA to 738 feet, increase all MDAs 40 feet.

MISSED APPROACH: Climb to 2200 then climbing right turn to 3000 on BNA VORTAC R-270 to BEVEE/BNA 22.4 DME and hold.

ATIS 127.075	NASHVILLE APP CON 119.35 372.0	JOHN TUNE TOWER ★ 119.45 (CTAF) 0	GND CON 121.7	CLNC DEL 121.7	CLNC DEL 124.55 (when twr closed)	UNICOM 122.7
------------------------	--	--	-------------------------	--------------------------	--	------------------------



2200	3000	BNA R-270	BEVEE	BICOL I-JWN (12) RADAR	One Minute Holding Pattern
		JOGIS I-JWN (4.3)	TWITY I-JWN (7.3)	018° → 4900	← 198° 2700
		I-JWN (2.9)	I-JWN (1.1)	2500	2500
		1560	GS 3.00°	TCH 40	
CATEGORY	A	B	C	D	
S-ILS 20	701-3/4				200 (200-3/4)
S-LOC 20	1100-1	599 (600-1)	1100-1 3/4	599 (600-1 3/4)	
C CIRCLING	1200-1	699 (700-1)	1340-2 1/2	839 (900-2 1/2)	1340-2 3/4
			839 (900-2 3/4)		



SE-1, 31 OCT 2024 to 28 NOV 2024

SE-1, 31 OCT 2024 to 28 NOV 2024