

WAAS CH 78325 W02A	APP CRS 018°	Rwy Idg TDZE Apt Elev	6001 484 501
---------------------------------	------------------------	-----------------------------	---

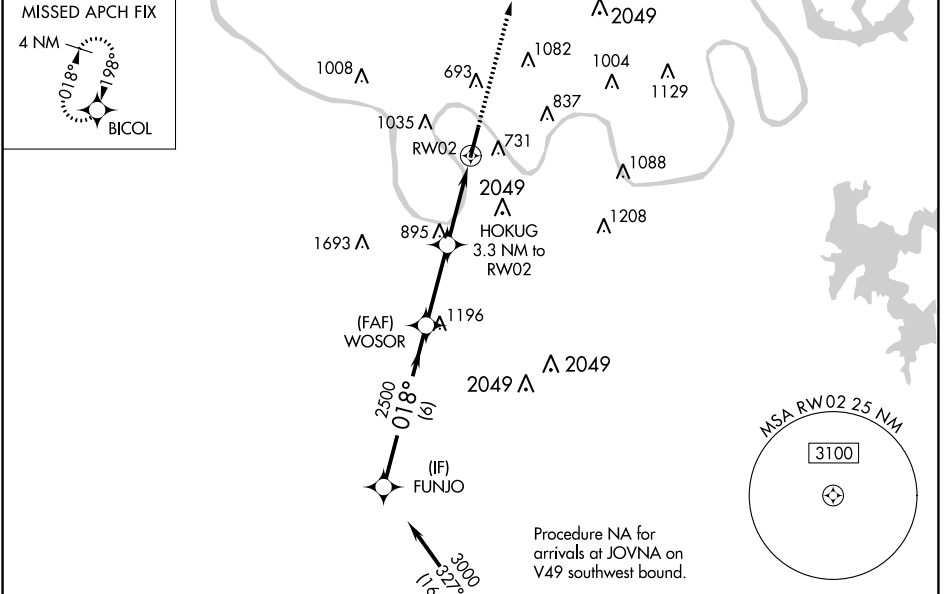
RNAV (GPS) RWY 2

JOHN C TUNE (JWN)

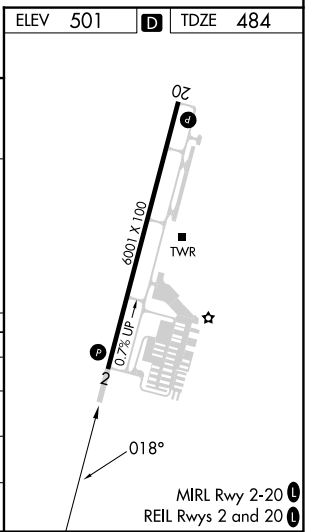
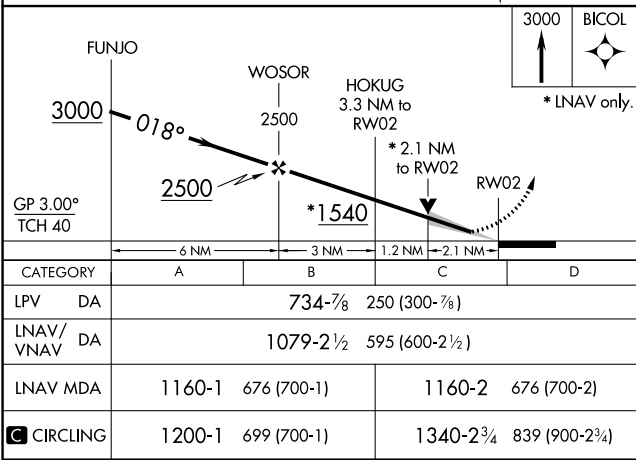
▽ For uncompensated Baro-VNAV systems, LNAV/VNAV NA below -15°C (5°F) or above 54°C (130°F). Circling NA E of Rwy 2-20. Baro-VNAV and VDP NA when using Nashville Intl altimeter setting. DME/DME RNP-0.3 NA. When local altimeter setting not received, use Nashville Intl altimeter setting and increase all DAs 39 feet and all MDAs 40 feet; increase LPV visibility all Cats 1/8 SM, LNAV visibility Cat B 1/4 SM.

MISSED APPROACH:
Climb to 3000 direct BICOL and hold.

ATIS 127.075	NASHVILLE APP CON 119.35 372.0	JOHN TUNE TOWER * 119.45 (CTAF) 0	GND CON 121.7	CLNC DEL 121.7	CLNC DEL 124.55 (when twr closed)	UNICOM 122.7
------------------------	--	---	-------------------------	--------------------------	--	------------------------



ELEV	501	D	TDZE	484
------	-----	----------	------	-----



SE-1, 31 OCT 2024 to 28 NOV 2024

SE-1, 31 OCT 2024 to 28 NOV 2024