

NDB/DME UKS 393	APP CRS 084°	Rwy Idg TDZE Apt Elev	N/A N/A 12
---------------------------	------------------------	--------------------------	---------------------------------------

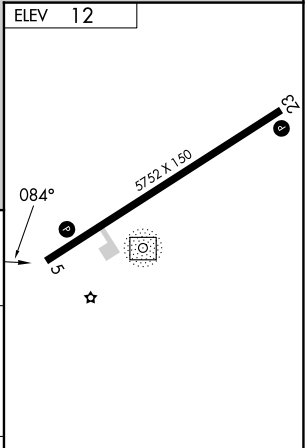
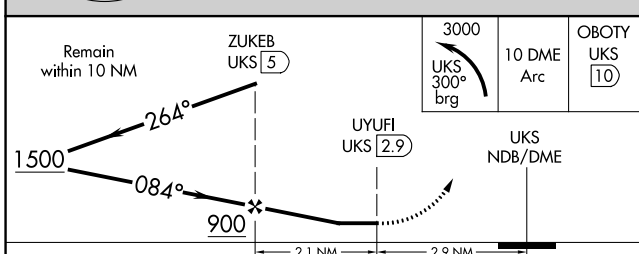
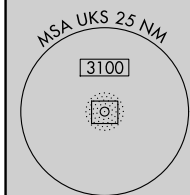
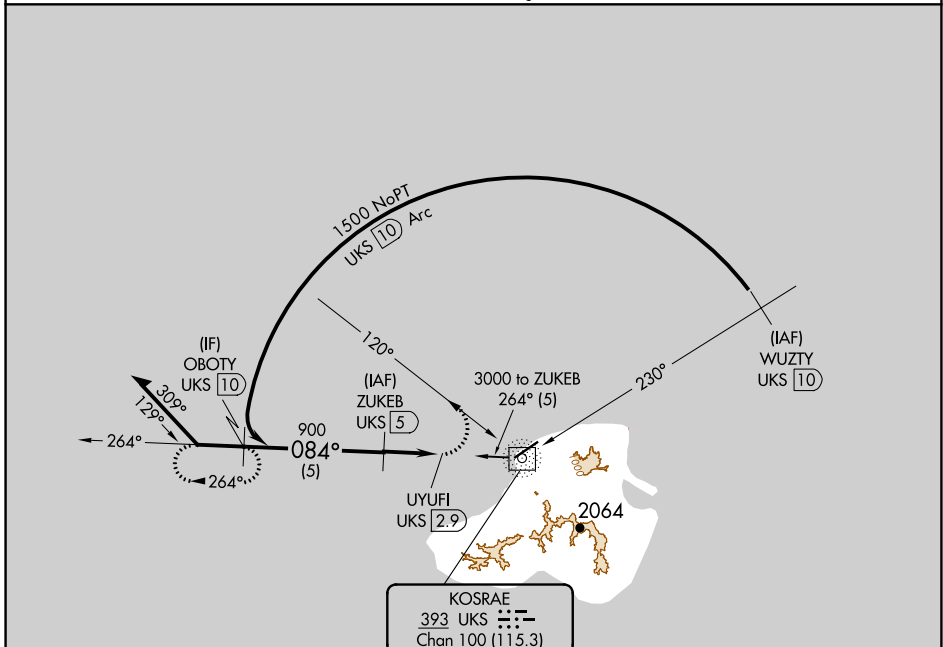
NDB-A
KOSRAE (TTK)(PTSA)

DME required.

▽ Circling NA southeast of Rwy 5-23. Obtain local altimeter setting on CTAF; when not received, procedure NA.
▲ NA No controlled airspace below 5500 feet.

MISSED APPROACH: Climbing left turn to 3000 on UKS NDB/DME 300° bearing and 10 DME Arc to OBOTY/10 DME.

KOSRAE RADIO
123.6 (CTAF) 0



CATEGORY	A	B	C	D
CIRCLING	520-3 508 (600-3)			580-3 568 (600-3)

MIRL Rwy 5-23 0
REL Rwys 5 and 23 0

PAC, 31 OCT 2024 to 26 DEC 2024

PAC, 31 OCT 2024 to 26 DEC 2024