

APP CRS 213°	Rwy Idg 5752
	TDZE 11
	Apt Elev 12

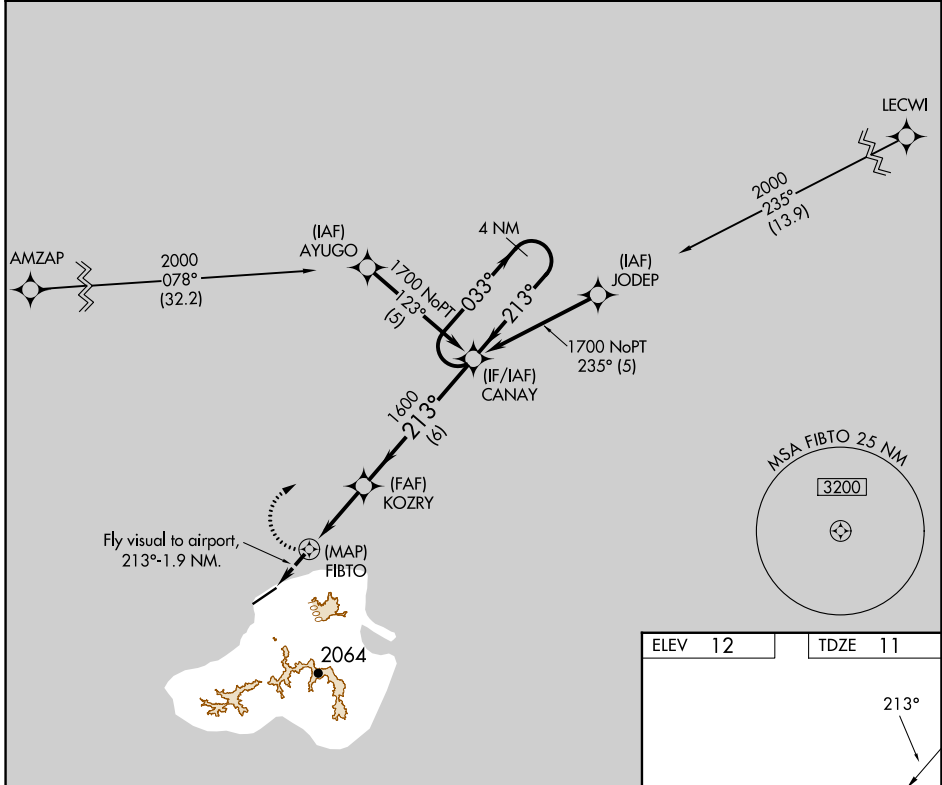
RNAV (GPS) RWY 23

KOSRAE (TTK)(PTSA)

⚠ Circling not authorized southeast of Rwy 5-23. Obtain local altimeter setting on CTAF; when not received, procedure not authorized. DME/DME RNP-0.3 NA. No controlled airspace below 5500.

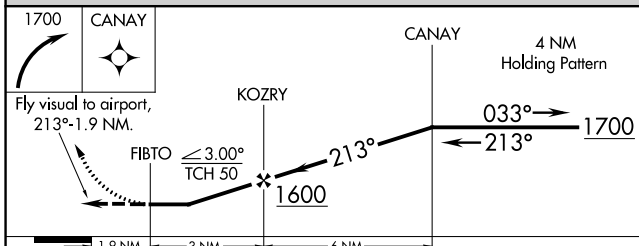
MISSED APPROACH: Climbing right turn to 1700 direct CANAY WP and hold.

KOSRAE RADIO
123.6 (CTAF) **0**

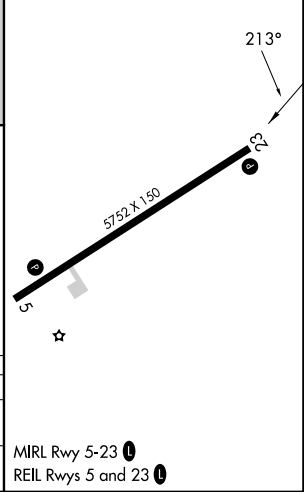


PAC, 31 OCT 2024 to 26 DEC 2024

PAC, 31 OCT 2024 to 26 DEC 2024



ELEV 12	TDZE 11
---------	---------



CATEGORY	A	B	C	D
LNVA MDA	800-2	789 (800-2)	800-2¼ 789 (800-2¼)	800-2½ 789 (800-2½)
CIRCLING	800-2	788 (800-2)	800-2¼ 788 (800-2¼)	800-2½ 788 (800-2½)