

(KER4.KER) 24081
KERMIT FOUR DEPARTURE

LINCOLN-TON-LINCOLN COUNTY RGNL (IPJ)
 AL-6894 (FAA)
 LINCOLN-TON, NORTH CAROLINA

CHARLOTTE DEP CON
 134.75 257.2
 AWOS-3
 119.675
 CLNC DEL (GCO)
 124.9
 UNICOM
 123.05

RADAR and DME required.

**TOP ALTITUDE:
 3000**

TAKEOFF MINIMUMS
 Rwy's 5, 23: Standard.

PULASKI
 116.8 PSK
 Chan 115

BARRETT'S MOUNTAIN
 113.75 BZM
 Chan 84(Y)

SUGARLOAF MOUNTAIN
 112.2 SUG
 Chan 59

CHARLOTTE
 115.0 CLT
 Chan 97

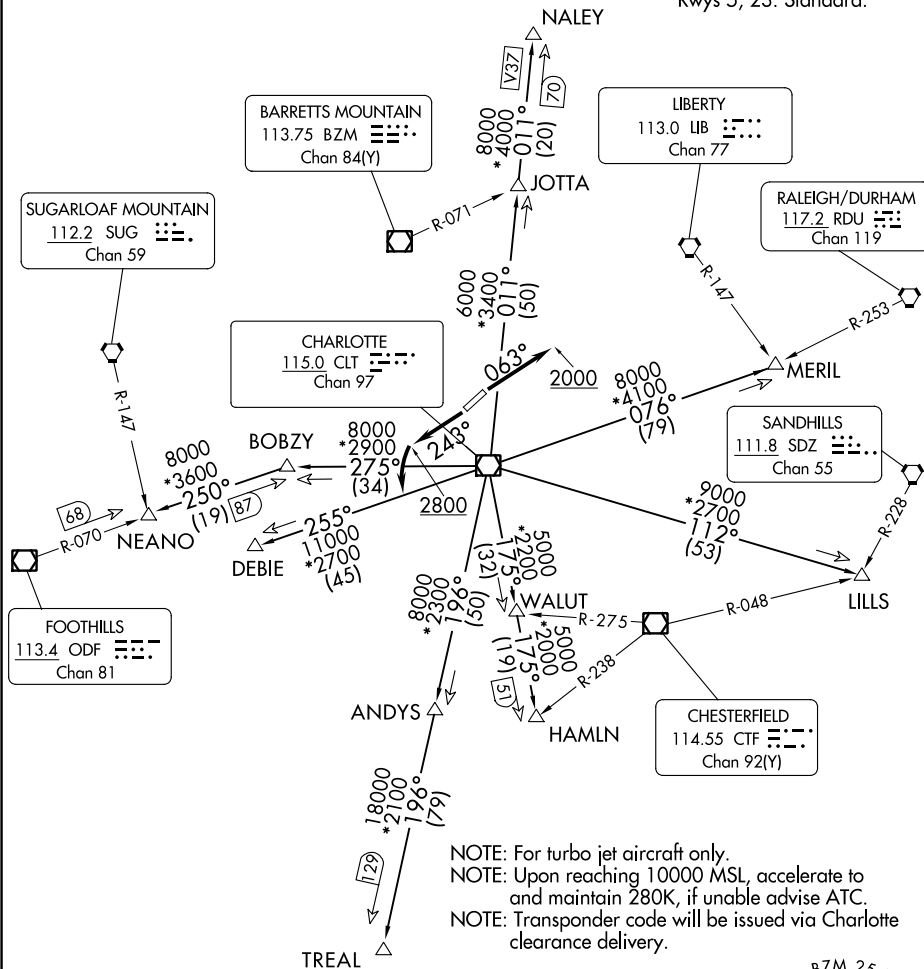
LIBERTY
 113.0 LIB
 Chan 77

RALEIGH/DURHAM
 117.2 RDU
 Chan 119

FOOTHILLS
 113.4 ODF
 Chan 81

SANDHILLS
 111.8 SDZ
 Chan 55

CHESTERFIELD
 114.55 CTF
 Chan 92(Y)



SE-2, 31 OCT 2024 to 28 NOV 2024

SE-2, 31 OCT 2024 to 28 NOV 2024

NOTE: Chart not to scale.

(CONTINUED ON FOLLOWING PAGE)

KERMIT FOUR DEPARTURE
 (KER4.KER) 21 MAR 24

LINCOLN-TON, NORTH CAROLINA
 LINCOLN-TON-LINCOLN COUNTY RGNL (IPJ)