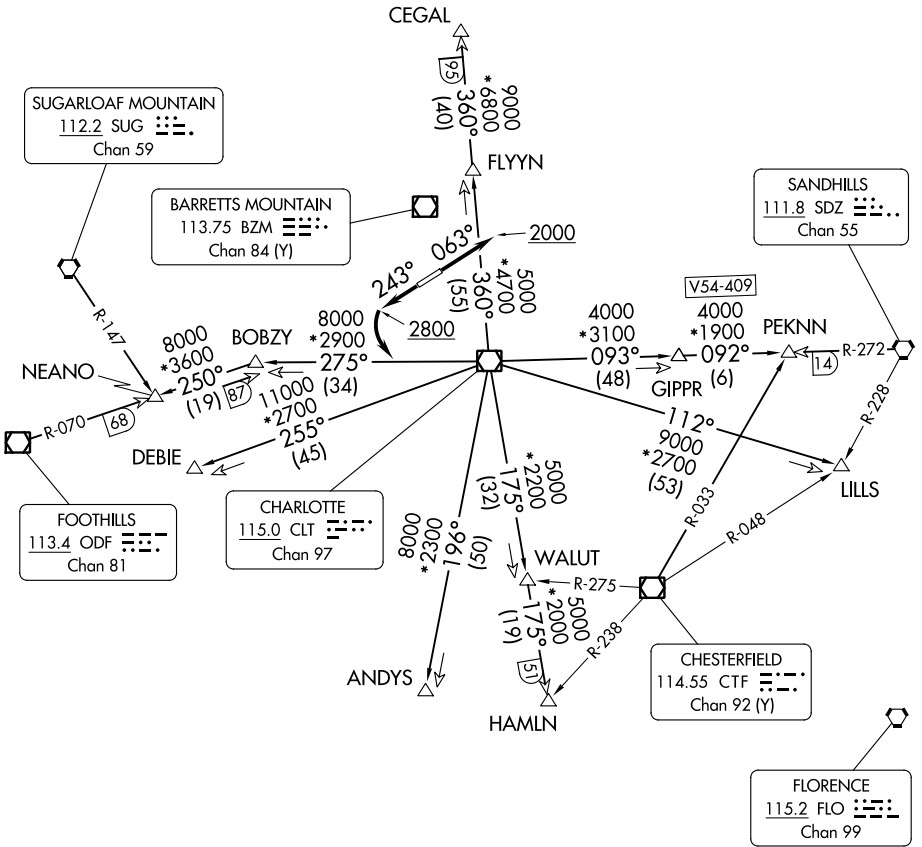


CHARLOTTE DEP CON  
 134.75 257.2  
 AWOS-3  
 119.675  
 CLNC DEL (GCO)  
 124.9  
 UNICOM (CTAF)  
 123.05

**TOP ALTITUDE:  
 3000**

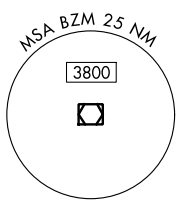
RADAR and DME required.

TAKEOFF MINIMUMS  
 Rwy 5, 23: Standard.



SE-2, 31 OCT 2024 to 28 NOV 2024

SE-2, 31 OCT 2024 to 28 NOV 2024



- NOTE: For propeller aircraft only.
- NOTE: Turboprops: Operate in a manner that will result in best forward speed and climb rate.
- NOTE: Transponder code will be issued via Charlotte clearance delivery.

(CONTINUED ON FOLLOWING PAGE)

NOTE: Chart not to scale.