

(KRITR6.KRITR) 24081

# KRITR SIX DEPARTURE (RNAV)

LINCOLN-TON-LINCOLN COUNTY RGNL (IPJ)  
AL-6894 (FAA) LINCOLN-TON, NORTH CAROLINA

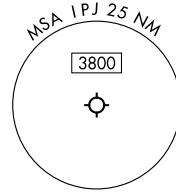
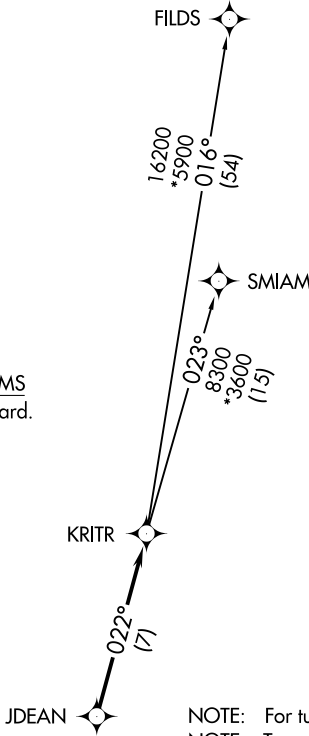
CHARLOTTE DEP CON  
134.75 257.2  
AWOS-3  
119.675  
CLNC DEL (GCO)  
124.9  
UNICOM (CTAF)  
123.05

**TOP ALTITUDE:  
3000**

RNAV 1 - DME/DME/IRU or GPS.

RADAR required.

TAKEOFF MINIMUMS  
Rwys 5, 23: Standard.



- NOTE: For turbo jets only.
- NOTE: Transponder code will be issued via PDC or Charlotte CLNC DEL.
- NOTE: If unable to accept climb rates, advise ATC on initial contact.
- NOTE: Upon reaching 10000 MSL, accelerate to and maintain 280K, if unable advise ATC.

NOTE: Chart not to scale.

SE-2, 31 OCT 2024 to 28 NOV 2024

SE-2, 31 OCT 2024 to 28 NOV 2024



## DEPARTURE ROUTE DESCRIPTION

TAKEOFF RUNWAY 5: Climb on heading 063° to 2000 before proceeding on course, then on heading assigned by ATC, thence. . . .

TAKEOFF RUNWAY 23: Climb on heading 243° to 2800 before turning left, then on heading assigned by ATC, thence. . . .

. . . .on RADAR vectors to JDEAN, then on track 022° to KRITR, then on assigned transition. Maintain 3000. Expect clearance to filed altitude within 10 minutes after departure.

FILDS TRANSITION (KRITR6.FILDS)  
SMIAM TRANSITION (KRITR6.SMIAM)

# KRITR SIX DEPARTURE (RNAV)

(KRITR6.KRITR) 21MAR24

LINCOLN-TON, NORTH CAROLINA  
LINCOLN-TON-LINCOLN COUNTY RGNL (IPJ)