

WAAS CH <b>69210</b> <b>W23A</b>	APP CRS <b>233°</b>	Rwy ldg TDZE Apt Elev	<b>5501</b> <b>872</b> <b>878</b>
--	------------------------	-----------------------------	---

# RNAV (GPS) RWY 23

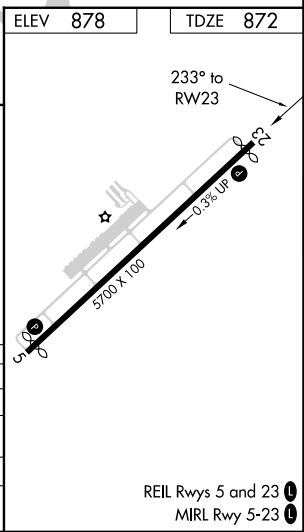
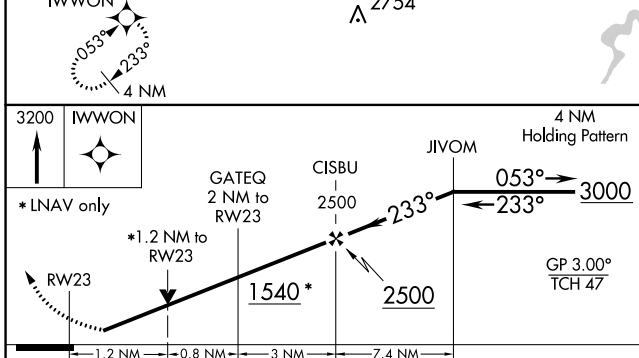
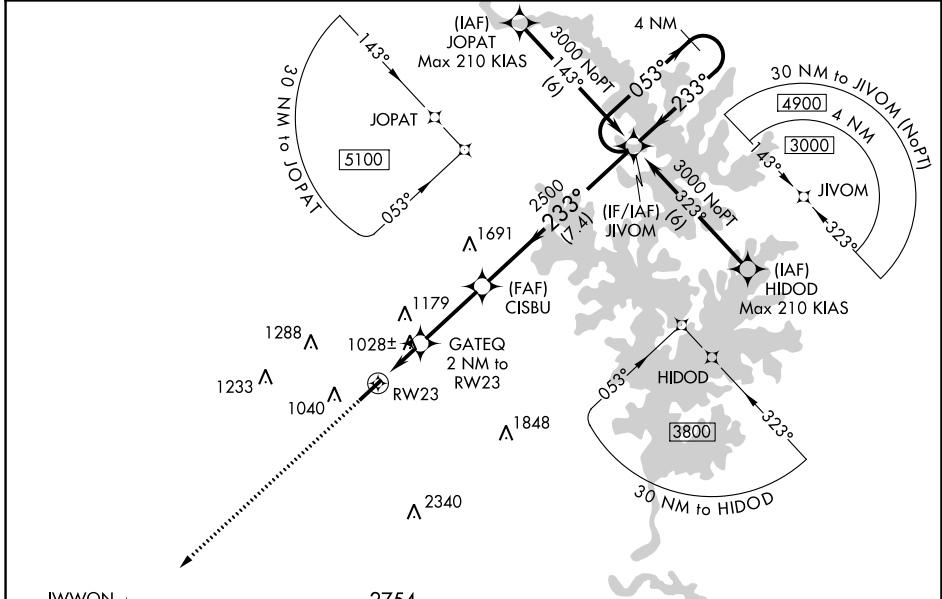
LINCOLNTON-LINCOLN COUNTY RGNL (IPJ)

RNP APCH.

⚠ When local altimeter setting not received, use Charlotte altimeter setting: increase LPV DA to 1212 feet, LNAV/VNAV DA to 1204 feet and all visibilities 1/8 SM; increase all MDAs 80 feet and visibility Cats C and D 1/4 SM. Baro-VNAV and VDP NA when using Charlotte altimeter setting. Rwy 23 helicopter visibility reduction below 3/4 SM NA. For uncompensated Baro-VNAV systems, LNAV/VNAV NA below -16°C or above 54°C.

MISSED APPROACH:  
Climb to 3200 direct  
IWWON and hold.

AWOS-3 <b>119.675</b>	CHARLOTTE APP CON <b>134.75 257.2</b>	CLNC DEL (GCO) <b>124.9</b>	UNICOM <b>123.05</b> (CTAF) <b>1</b>
--------------------------	--	--------------------------------	---



CATEGORY	A	B	C	D
LPV DA		1149-7/8	277 (300-7/8)	
LNAV/VNAV DA		1141-7/8	269 (300-7/8)	
LNAV MDA	1280-1	408 (500-1)	1280-1 1/8	408 (500-1 1/8)
CIRCLING	1400-1 522 (600-1)	1440-1 562 (600-1)	1640-2 1/4 762 (800-2 1/4)	1640-2 1/2 762 (800-2 1/2)

REIL Rwy 5 and 23 **1**  
MIRL Rwy 5-23 **1**

SE-2, 31 OCT 2024 to 28 NOV 2024

SE-2, 31 OCT 2024 to 28 NOV 2024