

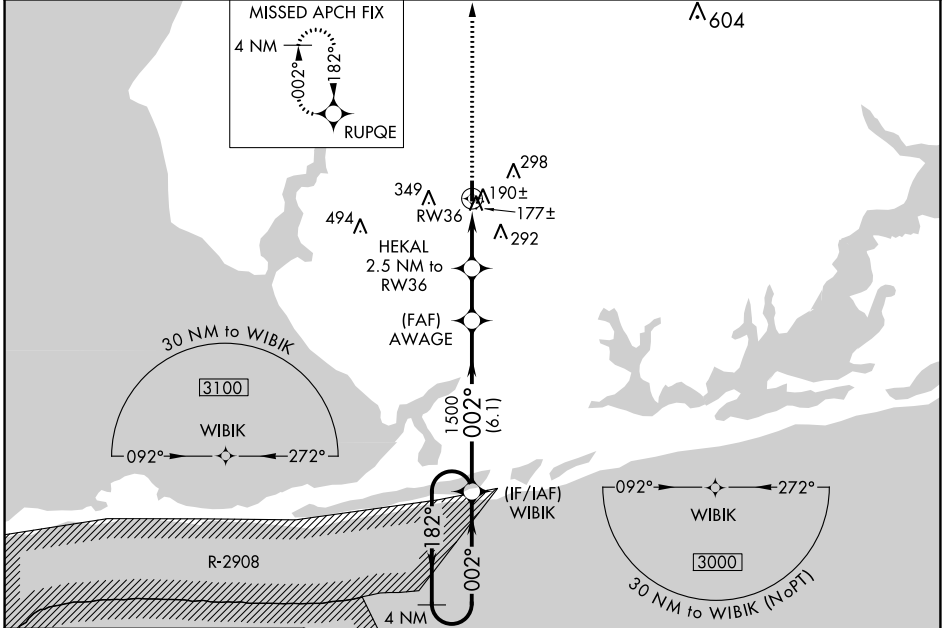
WAAS CH 93515 W36A	APP CRS 002°	Rwy ldg 3513 TDZE 73 Apt Elev 74
--	------------------------	---

RNAV (GPS) RWY 36

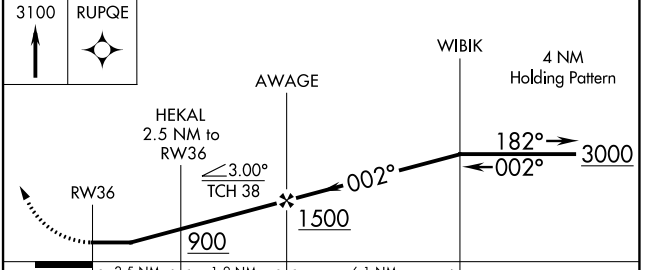
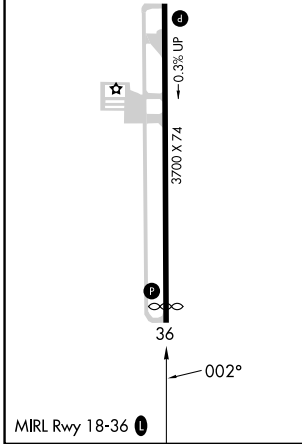
FOLEY MUNI (5R4)

RNP APCH - GPS		MISSED APPROACH: Climb to 3100 direct RUPQE and hold, continue climb-in-hold to 3100.
Procedure NA at night. Rwy 36 helicopter visibility reduction below 1 SM NA. Use Fairhope altimeter setting. When not received, use Gulf Shores altimeter setting and increase all MDA 20 feet; increase LP and LNAV Cat C visibility 1/8 SM and Circling Cat C visibility 1/4 SM.		

CQF AWOS-3PT 118.425	PENSACOLA APP CON 118.6 380.6	UNICOM 123.05 (CTAF) 0
--------------------------------	---	----------------------------------



ELEV 74	TDZE 73
---------	---------



CATEGORY	A	B	C	D
LP MDA	500-1	427 (500-1)	500-1¼ 427 (500-1¼)	NA
LNAV MDA	500-1	427 (500-1)	500-1¼ 427 (500-1¼)	NA
C CIRCLING	680-1	606 (700-1)	880-2¼ 806 (900-2¼)	NA

SE-4, 31 OCT 2024 to 28 NOV 2024

SE-4, 31 OCT 2024 to 28 NOV 2024