

IZZ0 EIGHT DEPARTURE (RNAV)

AL-6915 (FAA)

GLENDALE RGNL (GEU)
GLENDALE, ARIZONA

SW-4, 31 OCT 2024 to 28 NOV 2024

TOP ALTITUDE: ASSIGNED BY ATC

LUKE DEP CON*
 118.15 363.125
 PHOENIX DEP CON
 120.7 239.0
 ATIS
 119.425
 GND CON
 118.0
 GLENDALE TOWER*
 121.0

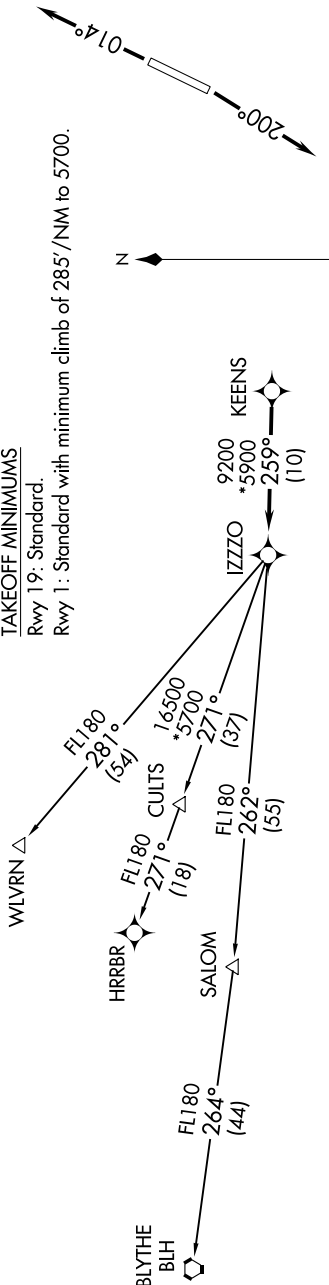
RNAV 1 - GPS.

RADAR required.

- NOTE: Turbojets and turboprops only.
- NOTE: Aircraft requesting FL220 and below must file BLYTHE Transition.
- NOTE: Turbojets landing LAX, file WLVRN Transition.
- NOTE: Aircraft landing other than LAX and turboprops landing at LAX: Requesting FL240 and above, file HRRBR Transition.
- NOTE: Aircraft departing KGEU and KGYR ATC assigned only.

TAKEOFF MINIMUMS

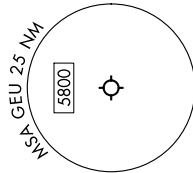
Rwy 19: Standard.
 Rwy 1: Standard with minimum climb of 285'/NM to 5700.



DEPARTURE ROUTE DESCRIPTION

TAKEOFF RUNWAY 1: Climb on heading 014° or as assigned by ATC, thence. . . .
 TAKEOFF RUNWAY 19: Climb on heading 200° or as assigned by ATC, thence. . . .
 . . . for RADAR vectors to KEENS, then on track 259° to IZZO, then on (transition).
 Maintain ATC assigned altitude, expect filed altitude 3 minutes after departure.

- BLYTHE TRANSITION (IZZ08.BLH)
- HRRBR TRANSITION (IZZ08.HRRBR)
- WLVRN TRANSITION (IZZ08.WLVRN)



NOTE: Chart not to scale.

IZZ0 EIGHT DEPARTURE (RNAV)

SW-4, 31 OCT 2024 to 28 NOV 2024