

WAAS CH <b>87004</b> W19A	APP CRS <b>194°</b>	Rwy Idg TDZE Apt Elev	<b>6115</b> <b>1065</b> <b>1071</b>
---------------------------------	------------------------	-----------------------------	---

# RNAV (GPS) RWY 19

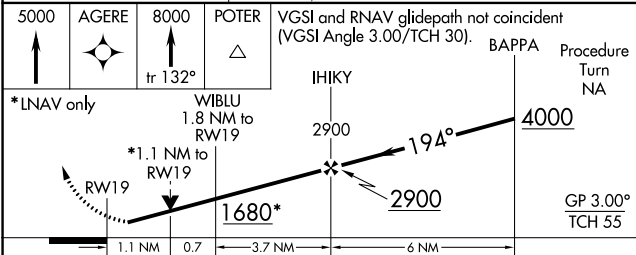
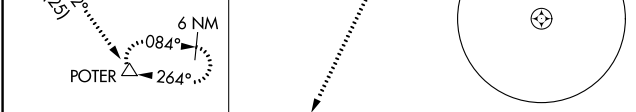
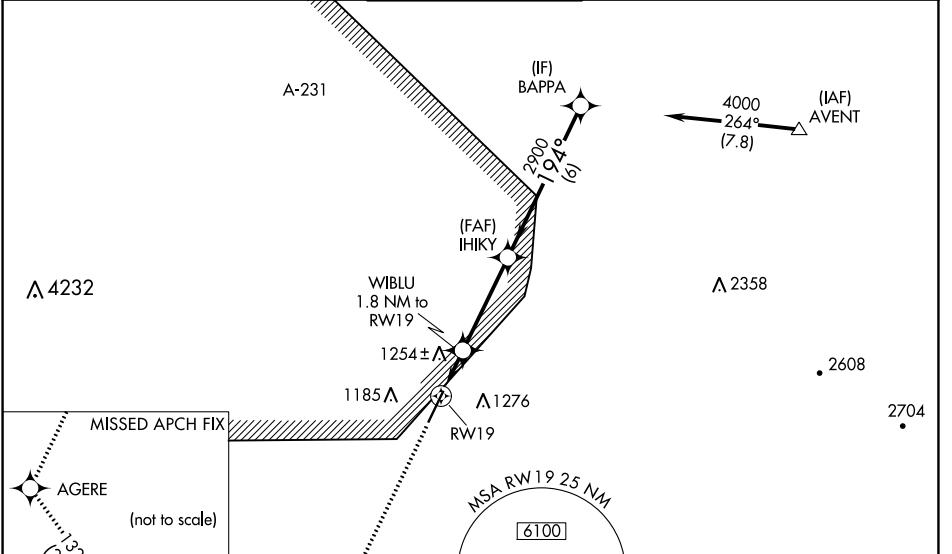
GLENDALE RGNL (GEU)

RNP APCH.

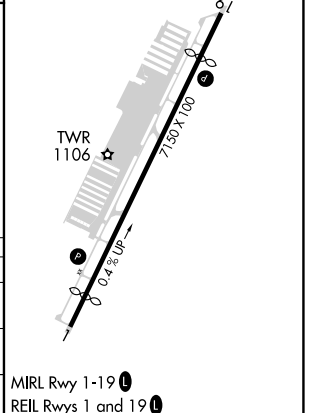
▼ For uncompensated Baro-VNAV systems, LNAV/VNAV NA below -17°C or above 47°C.  
 ▲ Rwy 19 helicopter visibility reduction below 3/4 SM NA. VDP and Baro-VNAV NA when using Phoenix Sky Harbor Inrl altimeter setting. When local altimeter setting not received, use Phoenix Sky Harbor Inrl altimeter setting: increase LPV DA to 1384 feet; increase LNAV/VNAV DA to 1617 feet and all Cats visibility 1/4 SM; increase all MDA 60 feet and LNAV Cat C and D visibility 1/4 SM.

MISSED APPROACH: Climb to 5000 direct AGERE then climb to 8000 on track 132° to POTER and hold.

ATIS <b>119.425</b>	LUKE APP CON* <b>118.15 363.125</b>	GLENDALE TOWER* <b>121.0</b> (CTAF) 0	GND CON <b>118.0</b>	UNICOM <b>122.95</b>
------------------------	--	--	-------------------------	-------------------------



ELEV 1071	<b>D</b>	TDZE 1065
-----------	----------	-----------



CATEGORY	A	B	C	D
LPV DA	1339-1		274 (300-1)	
LNAV/VNAV DA	1572-1 3/4		507 (600-1 3/4)	
LNAV MDA	1540-1 475 (500-1)		1540-1 3/8 475 (500-1 3/8)	1540-1 1/2 475 (500-1 1/2)

MRL Rwy 1-19 0  
REL Rws 1 and 19 0

SW-4, 31 OCT 2024 to 28 NOV 2024

SW-4, 31 OCT 2024 to 28 NOV 2024