

LOC/DME I-TEX 109.3 Chan 30	APP CRS 093°	Rwy Idg 6911 TDZE 9037 Apt Elev 9070
--	------------------------	---

LOC RWY 9

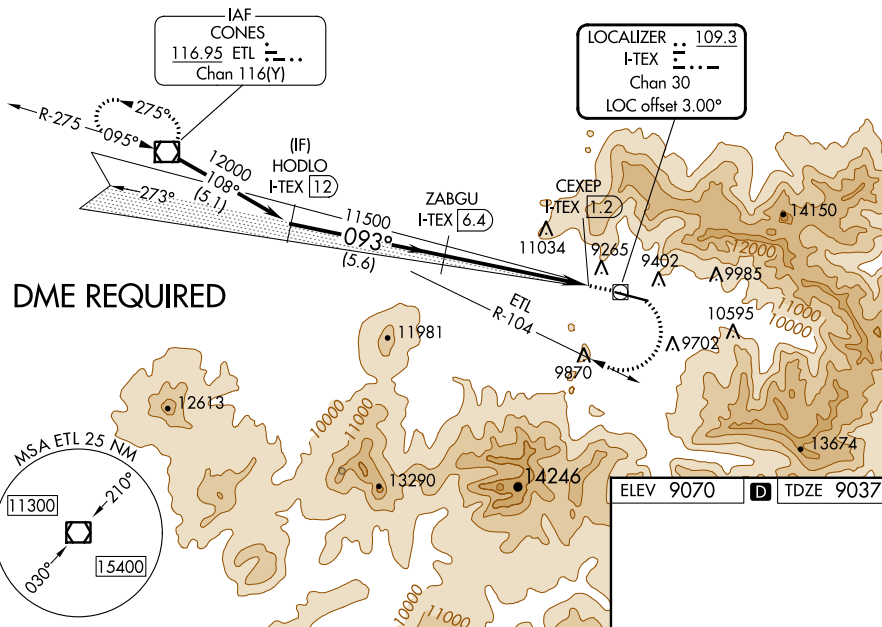
TELLURIDE RGNL (TEX)

⚠ Circling NA north of Rwy 9-27.
⚠ Circling NA at night.
⚠ DME required.

MISSED APPROACH: Climb to 11800 then climbing right turn to 13500 on ETL R-104 to ETL VOR/DME and hold.

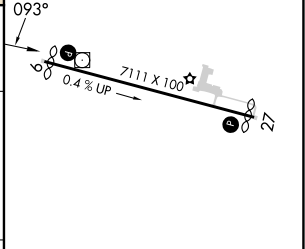
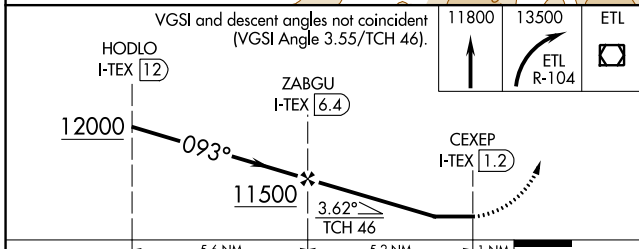
AWOS-3 118.325	DENVER CENTER 125.35 354.05	UNICOM 123.0 (CTAF) 0
--------------------------	---------------------------------------	---------------------------------

Procedure NA for arrivals at ETL VOR/DME on V382 northwest bound.



DME REQUIRED

ELEV 9070	D	TDZE 9037
-----------	----------	-----------



CATEGORY	A	B	C	D
S-9	11340-1¼ 2303 (2300-1¼)	11340-1½ 2303 (2300-1½)		NA
C CIRCLING	11340-1¼ 2270 (2300-1¼)	11340-1½ 2270 (2300-1½)		NA

HIRL Rwy 9-27 **0**
 REIL Rwy 9 and 27 **0**

SW-1, 31 OCT 2024 to 28 NOV 2024

SW-1, 31 OCT 2024 to 28 NOV 2024