

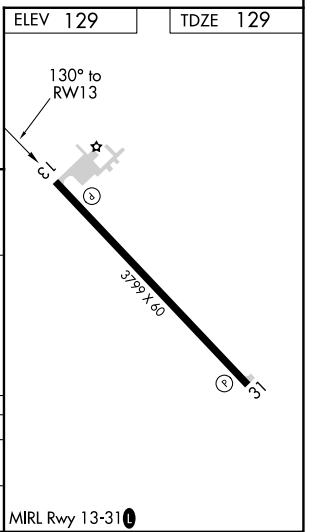
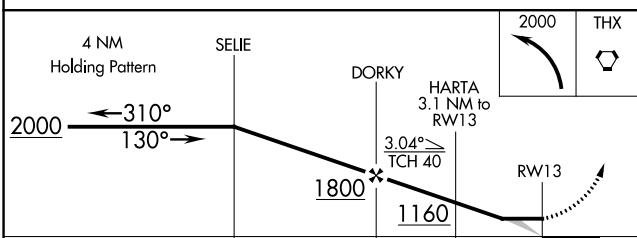
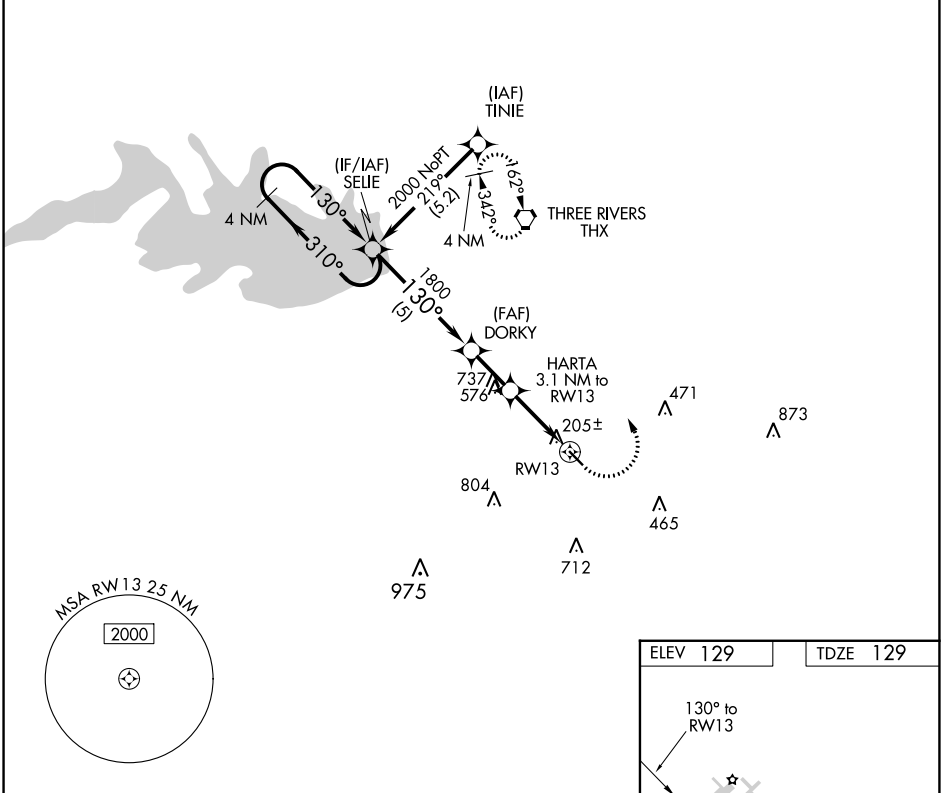
APP CRS <b>130°</b>	Rwy Idg TDZE Apt Elev	<b>3799</b> <b>129</b> <b>129</b>
------------------------	-----------------------------	---

# RNAV (GPS) RWY 13

LIVE OAK COUNTY (8T6)

**NA** Use Alice Intl altimeter setting. DME/DME RNP-0.3 NA. Procedure NA at night. Visibility reduction by helicopters NA. MISSED APPROACH: Climbing left turn to 2000 direct THX VORTAC and hold.

AWOS-3PT <b>119.05</b>	ALI ASOS <b>119.225</b>	HOUSTON CENTER <b>134.6 322.5</b>	CTAF <b>122.9</b>	<b>122.7 0</b>
---------------------------	----------------------------	--------------------------------------	----------------------	----------------



CATEGORY	A	B	C	D
LNVA MDA	700-1 571 (600-1)		700-1½ 571 (600-1½)	NA
CIRCLING	760-1 631 (700-1)	860-1 731 (800-1)	860-2 731 (800-2)	NA

SC-3, 31 OCT 2024 to 28 NOV 2024

SC-3, 31 OCT 2024 to 28 NOV 2024