

VORTAC CWK <b>112.8</b> Chan <b>75</b>	APP CRS <b>194°</b>	Rwy Idg <b>4000</b> TDZE <b>600</b> Apt Elev <b>600</b>
--	------------------------	---

# VOR RWY 17

TAYLOR MUNI (T74)

DME required.

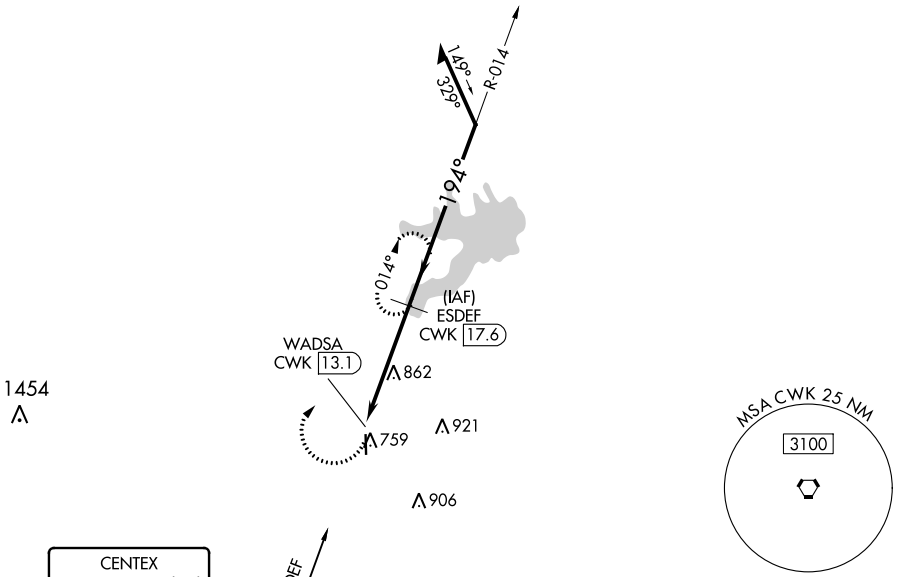
**⚠** Circling Rwy 35 NA at night. Rwy 17 helicopter visibility reduction below 3/4 SM NA.  
**⚠** When local altimeter setting not received, use Austin Exec altimeter setting and increase all MDA 40 feet. VDP NA when using Austin Exec altimeter setting.

MISSED APPROACH: Climbing right turn to 2500 on CWK VORTAC R-014 to ESDEF/17.6 DME and hold.

AWOS-3PT  
**119.75**

AUSTIN APP CON  
**127.225 317.65**

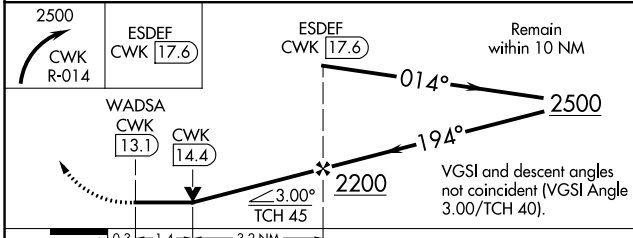
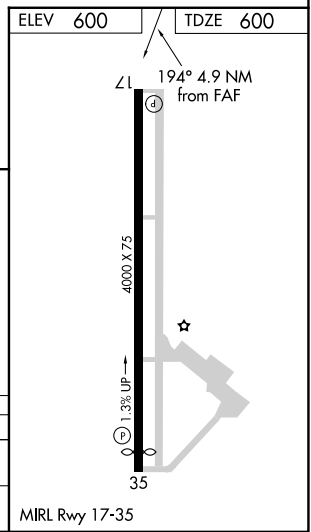
UNICOM  
**122.8 (CTAF)**



SC-3, 31 OCT 2024 to 28 NOV 2024

SC-3, 31 OCT 2024 to 28 NOV 2024

CENTEX  
112.8 CWK  
Chan 75



CATEGORY	A	B	C	D
S-17	1180-1	580 (600-1)		NA
<b>C</b> CIRCLING	1180-1	580 (600-1)		NA

MIRL Rwy 17-35