

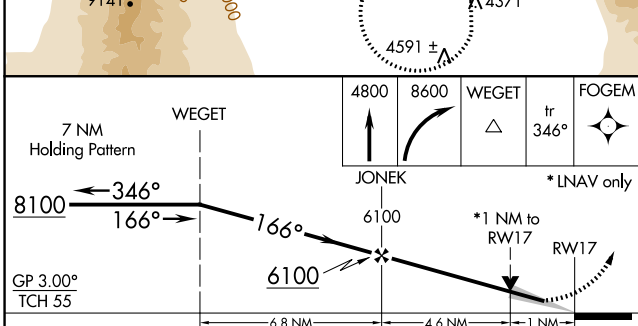
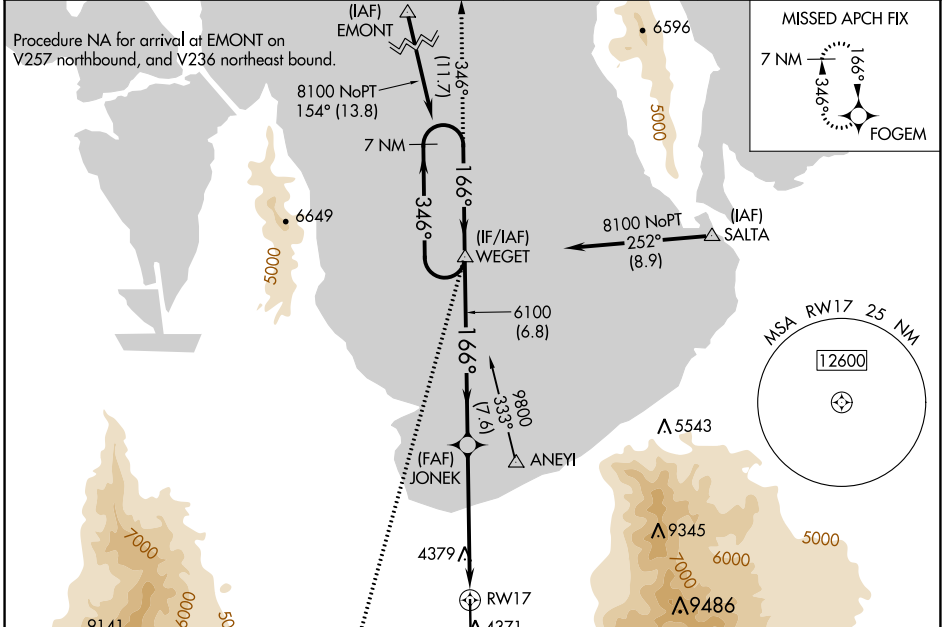
WAAS CH <b>73031</b> <b>W17A</b>	APP CRS <b>166°</b>	Rwy Idg TDZE Apt Elev	<b>6102</b> <b>4297</b> <b>4322</b>
--	------------------------	-----------------------------	---

# RNAV (GPS) RWY 17

BOLINDER FLD/TOOELE VALLEY (TVY)

For uncompensated Baro-VNAV systems, LNAV/VNAV NA below -23°C (-9°F) or above 49°C (120°F). DME/DME RNP-0.3 NA. For inop ALS, increase LNAV/VNAV all Cats visibility to ¾ SM, increase LNAV Cat C/D visibility to 1 SM.	MALSR AS	MISSED APPROACH: Climb to 4800 then climbing right turn to 8600 direct WEGET and track 346° to FOGEM and hold.
---	-------------	--

AWOS-3 <b>119.725</b>	SALT LAKE CITY APP CON <b>135.5 316.15</b>	CLNC DEL <b>124.4</b>	UNICOM <b>123.0 (CTAF)</b>
--------------------------	---	--------------------------	-------------------------------



ELEV 4322	TDZE 4297

CATEGORY	A	B	C	D
LPV DA		4497-½	200 (200-½)	
LNAV/VNAV DA		4547-½	250 (300-½)	
LNAV MDA	4640-½	343 (400-½)	4640-⅝	343 (400-⅝)
CIRCLING	4820-1 498 (500-1)	4900-1 578 (600-1)	5060-2 738 (800-2)	5380-3 1058 (1100-3)

SW-4, 31 OCT 2024 to 28 NOV 2024

SW-4, 31 OCT 2024 to 28 NOV 2024