

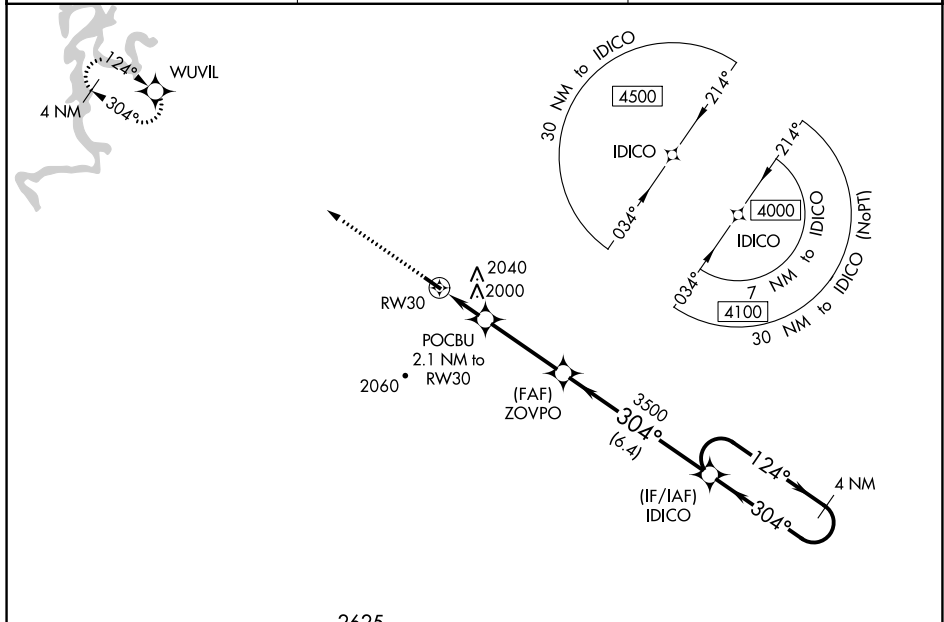
WAAS CH <b>40231</b> <b>W30A</b>	APP CRS <b>304°</b>	Rwy Idg TDZE Apt Elev	<b>3601</b> <b>1748</b> <b>1748</b>
--	------------------------	-----------------------------	---

# RNAV (GPS) RWY 30

HUNTSVILLE MUNI (H34)

RNP APCH - GPS.	<p>Baro-VNAV NA. Use Springdale altimeter setting; when not received, use Drake Fld altimeter setting and increase all DA 18 feet and all MDA 20 feet; increase LNAV/VNAV all Cats visibility ¼ mile. Circling NA to Rwys 3 and 21.</p>	<p>MISSED APPROACH: Climb to 4000 direct WUVIL and hold.</p>
-----------------	---	--

ASG AWOS-3 <b>124.675</b>	RAZORBACK APP CON * <b>126.6 305.2</b>	UNICOM <b>122.8 (CTAF) 0</b>
------------------------------	---	---------------------------------



ELEV 1748	TDZE 1748	<p>△ 2625</p>			
<p>4000 WUVIL</p>		<p>IDICO 4 NM Holding Pattern</p>			
<p>*LNAV only</p>		<p>ZOVPO 3500</p>			
<p>POCBU 2.1 NM to RWY 30</p>		<p>124° → 4000</p>			
<p>RWY 30</p>		<p>← 304°</p>			
<p>*2440</p>		<p>GP 3.00° TCH 40</p>			
<p>← 2.1 NM → ← 3.3 NM → ← 6.4 NM →</p>					
CATEGORY	A	B	C	D	
LPV DA	2047-1 299 (300-1)			NA	
LNAV/VNAV DA	2410-2¼ 662 (700-2¼)			NA	
LNAV MDA	2360-1	612 (700-1)	2360-1¾ 612 (700-1¾)	NA	
<input checked="" type="checkbox"/> CIRCLING	2360-1 612 (700-1)	2520-1 772 (800-1)	2520-2¼ 772 (800-2¼)	NA	

SC-1, 31 OCT 2024 to 28 NOV 2024

SC-1, 31 OCT 2024 to 28 NOV 2024