

WAAS CH <b>97540</b> <b>W24A</b>	APP CRS <b>238°</b>	Rwy Idg TDZE <b>3396</b> <b>575</b> Apt Elev <b>575</b>
--	------------------------	--

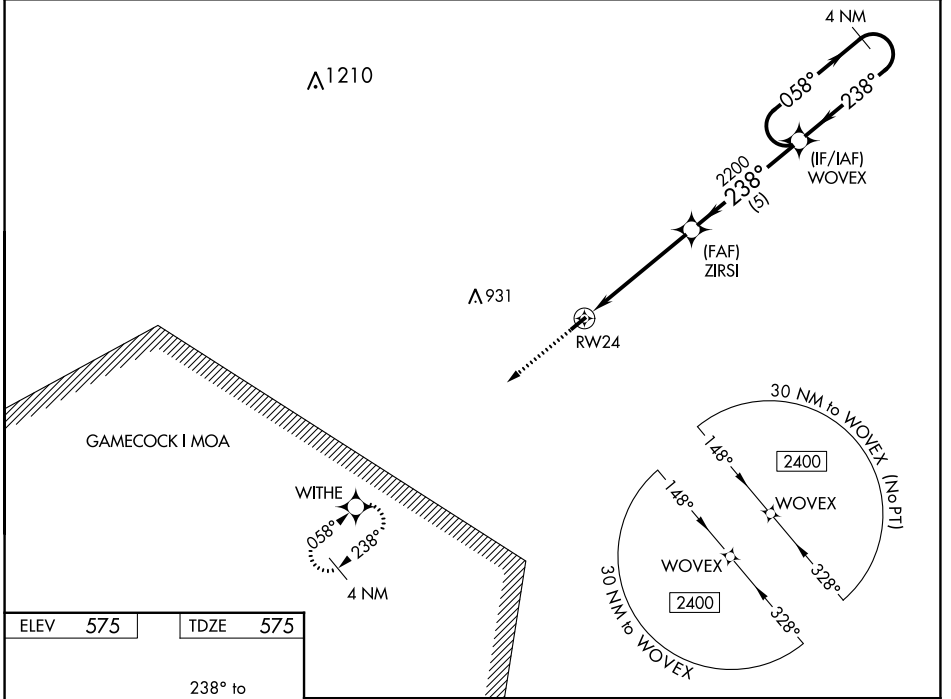
# RNAV (GPS) RWY 24

PAGELAND (PYG)

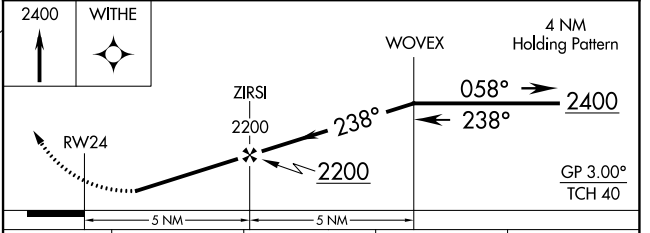
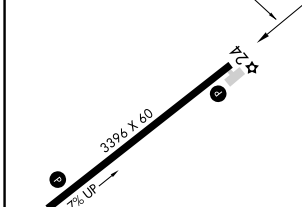
**Baro-VNAV NA.** Rwy 24 helicopter visibility reduction below 3/4 SM NA. **DME/DME RNP-0.3 NA.** Use Charlotte/Monroe Exec altimeter setting. When Charlotte/Monroe Exec altimeter not received, use Charlotte/Douglas Intl altimeter setting and increase LPV DA to 944 feet and all visibilities 1/4 SM. Increase LNAV/VNAV DA to 986 feet and all visibilities 1/2 SM. Increase all MDA 60 feet.

**MISSED APPROACH:** Climb to 2400 direct WITHE and hold.

EQY ASOS <b>135.775</b>	CHARLOTTE APP CON <b>120.05 307.8</b>	(CTAF) <b>122.9</b>
----------------------------	--	------------------------



ELEV 575	TDZE 575
----------	----------



CATEGORY	A	B	C	D
LPV DA	890-1	315 (400-1)		NA
LNAV/VNAV DA	932-1¼	357 (400-1¼)		NA
LNAV MDA	1040-1	465 (500-1)		NA
<b>C</b> CIRCLING	1100-1	525 (600-1)		NA

MIRL Rwy 6-24  
REIL Rws 6 and 24

SE-2, 31 OCT 2024 to 28 NOV 2024

SE-2, 31 OCT 2024 to 28 NOV 2024