

WAAS CH <b>45538</b> <b>W23A</b>	APP CRS <b>229°</b>	Rwy Idg TDZE <b>88</b> Apt Elev <b>90</b>	<b>5001</b>
--	------------------------	---	-------------

# RNAV (GPS) RWY 23

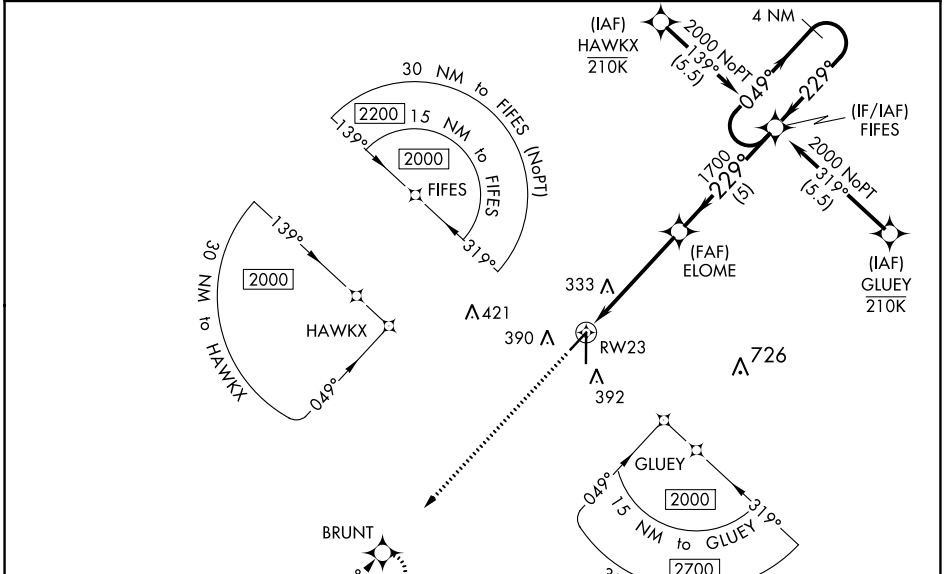
ZEPHYRHILLS MUNI (ZPH)

RNP APCH.

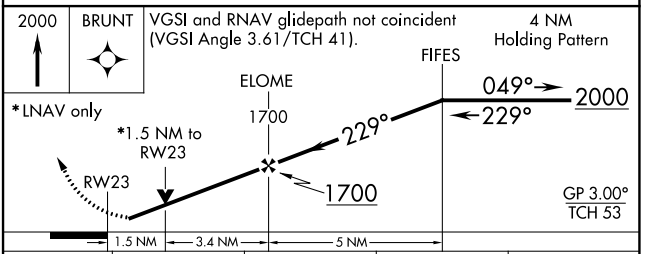
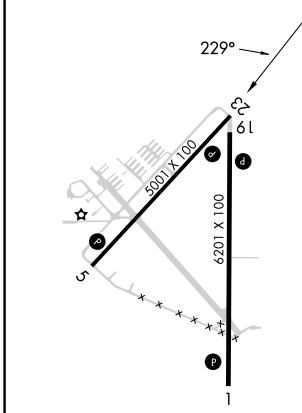
**⚠** Baro-VNAV and VDP NA when using Tampa Exec altimeter setting. For uncompensated Baro-VNAV systems, LNAV/VNAV NA below -15°C or above 54°C. Rwy 23 helicopter visibility reduction below ¼ SM NA. When local altimeter setting not received, use Tampa Exec altimeter setting and increase all DA 48 feet and all MDA 60 feet. Increase LPV and LNAV/VNAV all Cats, LNAV and Circling Cat C/D visibility ¼ mile.

MISSED APPROACH:  
Climb to 2000 direct BRUNT and hold.

AWOS-3PT <b>118.975</b>	TAMPA APP CON <b>119.9 290.3</b>	UNICOM <b>123.075 (CTAF)</b> <b>📻</b>
----------------------------	-------------------------------------	--



ELEV 90	TDZE 88
---------	---------



CATEGORY	A	B	C	D
LPV DA		377-1	289 (300-1)	
LNAV/VNAV DA		409-1	321 (400-1)	
LNAV MDA	600-1	512 (600-1)	600-1 $\frac{3}{8}$	512 (600-1 $\frac{3}{8}$ )
<b>C</b> CIRCLING	740-1	650 (700-1)	740-1 $\frac{3}{4}$ 650 (700-1 $\frac{3}{4}$ )	740-2 650 (700-2)

MIRL Rwy 5-23 **📻**  
 HIRL Rwy 1-19 **📻**  
 REIL Rws 1 and 19 **📻**

SE-3, 31 OCT 2024 to 28 NOV 2024

SE-3, 31 OCT 2024 to 28 NOV 2024