

WAAS CH 42623 W01A	APP CRS 006°	Rwy Idg TDZE 346 Apt Elev 357	5009
----------------------------------------	------------------------	---------------------------------------------------	-------------

RNAV (GPS) RWY 1

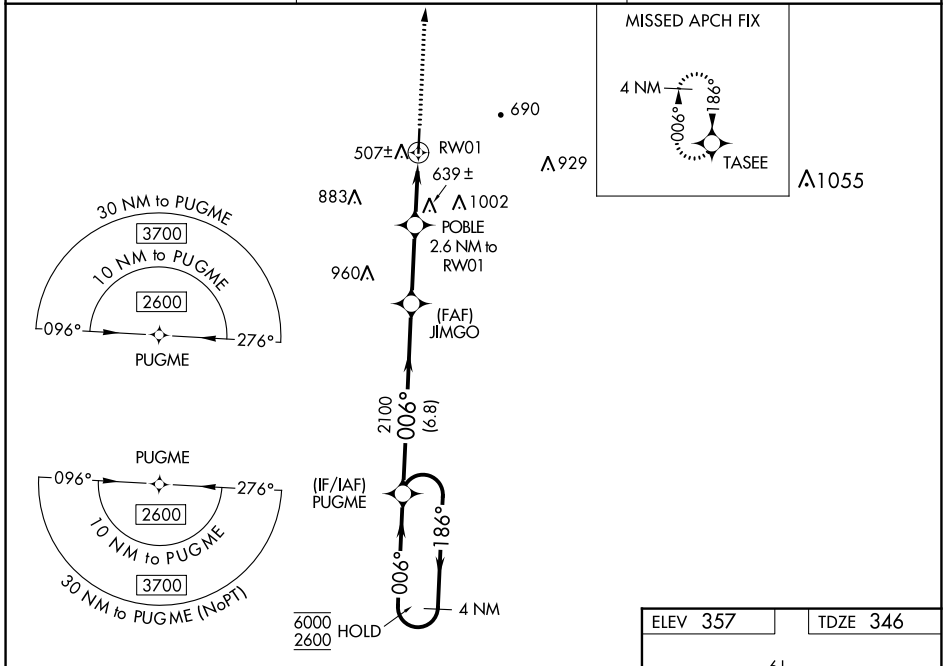
RICHARD ARTHUR FLD (M95)

RNP APCH.

NA Procedure NA at night. Rwy 1 helicopter visibility reduction below 1 SM NA. Baro-VNAV NA. Use Jasper altimeter setting; when not received, use Tuscaloosa altimeter setting and increase LPV DA to 680, LNAV/VNAV DA to 1008, and all MDA 20 feet; increase LNAV/VNAV all Cat visibility 1/4 SM.

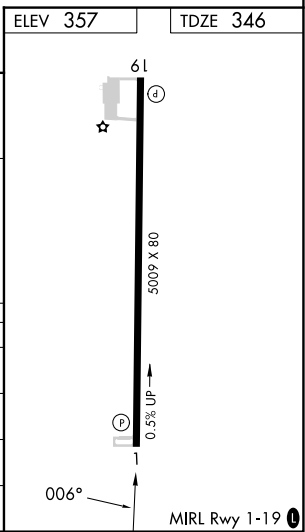
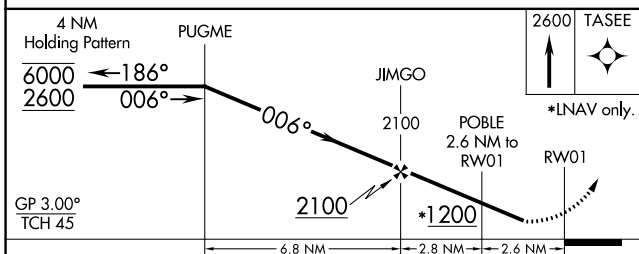
MISSED APPROACH: Climb to 2600 direct TASEE and hold.

JFX AWOS-3PT 119.225	COLUMBUS APP CON * 126.075 239.25	UNICOM 122.8 (CTAF) 0
--------------------------------	---------------------------------------------	---------------------------------



SE-4, 31 OCT 2024 to 28 NOV 2024

SE-4, 31 OCT 2024 to 28 NOV 2024



CATEGORY	A	B	C	D
LPV DA	679-1 1/8 333 (400-1 1/8)			
LNAV/VNAV DA	1007-2 1/4 661 (700-2 1/4)			
LNAV MDA	980-1	634 (700-1)	980-1 7/8	634 (700-1 7/8)
CIRCLING	1020-1 663 (700-1)	1060-1 703 (800-1)	1400-3	1043 (1100-3)