

VORTAC EED 115.2 Chan 99	APP CRS 335°	Rwy Idg 8500 TDZE 707 Apt Elev 707
--	------------------------	---

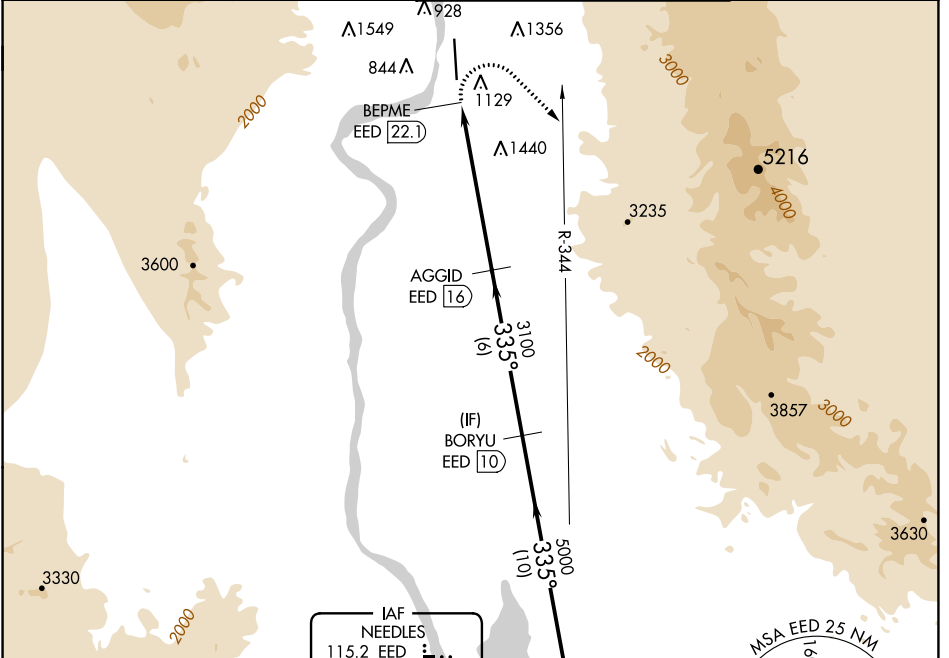
VOR RWY 34

LAUGHLIN/BULLHEAD INTL (IFP)

⚠ Rwy 34 helicopter visibility reduction below ¼ SM NA. DME required. Circling Rwy 16 NA at night.

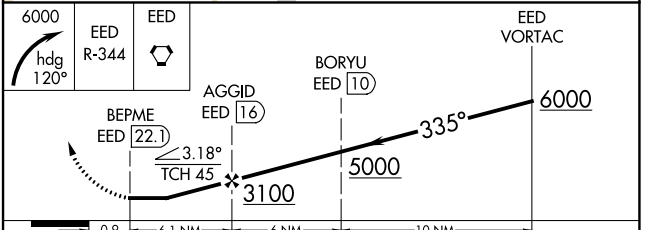
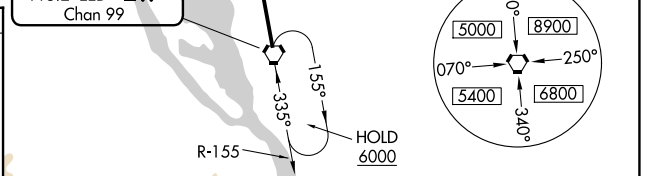
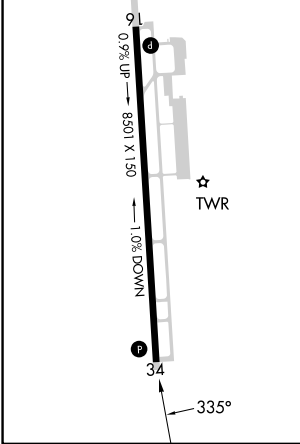
MISSED APPROACH: Climbing right turn to 6000 on heading 120° and EED VORTAC R-344 to EED VORTAC and hold.

ATIS* 119.825	LOS ANGELES CENTER 134.65 360.65	BULLHEAD TOWER* 123.9 (CTAF) 0	GND CON 118.25
-------------------------	--	--	--------------------------



ELEV 707	D TDZE 707
-----------------	--------------------------

MIRL Rwy 16-34
REIL Rws 16 and 34



	0.9	6.1 NM	6 NM	10 NM	
CATEGORY	A	B	C	D	
S-34	2840-1¼ 2133 (2200-1¼)	2840-1½ 2133 (2200-1½)	2840-3	2133 (2200-3)	
C CIRCLING	2840-1¼ 2133 (2200-1¼)	2840-1½ 2133 (2200-1½)	2840-3	2133 (2200-3)	

SW-4, 31 OCT 2024 to 28 NOV 2024

SW-4, 31 OCT 2024 to 28 NOV 2024