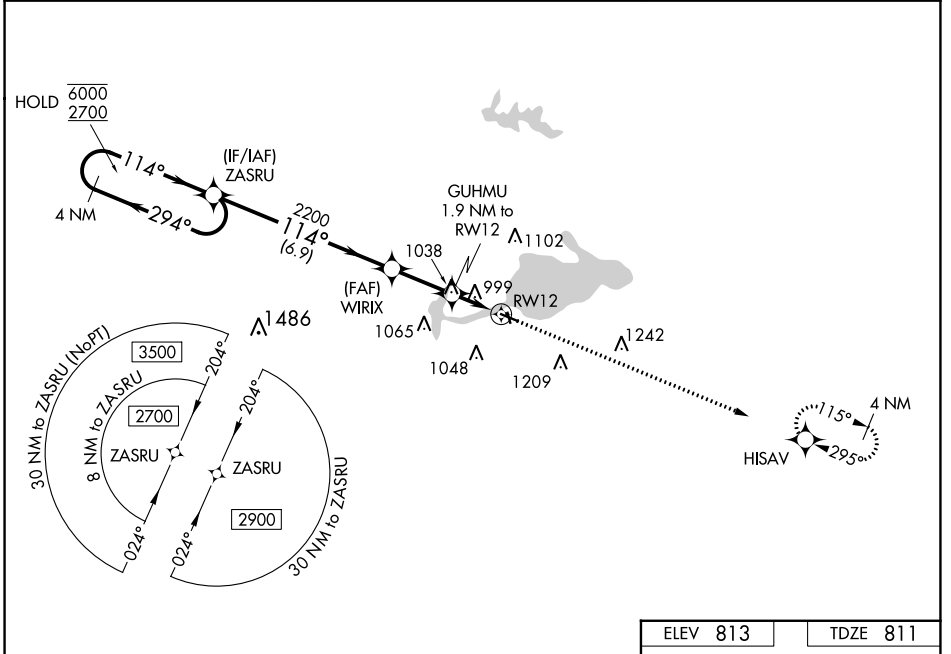


WAAS CH <b>86429</b> <b>W12A</b>	APP CRS <b>114°</b>	Rwy Idg TDZE Apt Elev	<b>3901</b> <b>811</b> <b>813</b>
--	------------------------	-----------------------------	---

# RNAV (GPS) RWY 12

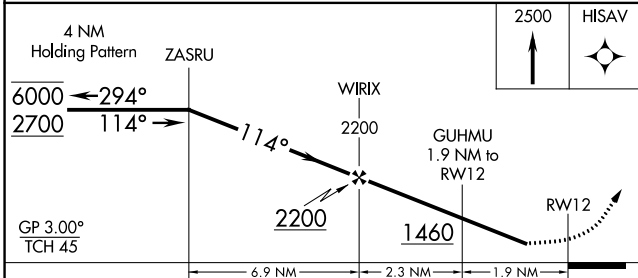
SHAWANO MUNI (E/ZS)

RNP APCH - GPS.		MISSED APPROACH: Climb to 2500 direct HISAV and hold.
<p><b>▼</b> Rwy 12 helicopter visibility reduction below 1 SM NA. For uncompensated Baro-VNAV systems, LNAV/VNAV NA below -16°C or above 54°C. Straight-in Rwy 12 and Circling Rwy 12, 35 NA at night.</p> <p><b>▲</b></p>		
AWOS-3 <b>118.65</b>	GREEN BAY APP CON ★ <b>119.4 338.2</b>	UNICOM <b>122.8 (CTAF) 0</b>



EC-3, 31 OCT 2024 to 28 NOV 2024

EC-3, 31 OCT 2024 to 28 NOV 2024



ELEV 813	TDZE 811
<p>2500 HISAV</p>	
<p>WATER ALL-WAY: 12000 X 1000</p>	
<p>MIRL Rwy 12-30 and 17-35 0 REIL Rwy 30 0</p>	

CATEGORY	A	B	C	D
LPV DA		1082-1	271 (300-1)	
LNAV/VNAV DA		1378-1 <sup>5</sup> / <sub>8</sub>	567 (600-1 <sup>5</sup> / <sub>8</sub> )	
LNAV MDA	1300-1	489 (500-1)	1300-1 <sup>3</sup> / <sub>8</sub>	489 (500-1 <sup>5</sup> / <sub>8</sub> )
<b>C</b> CIRCLING	1340-1 527 (600-1)	1440-1 627 (700-1)	1680-2 <sup>1</sup> / <sub>2</sub> 867 (900-2 <sup>1</sup> / <sub>2</sub> )	1680-2 <sup>3</sup> / <sub>4</sub> 867 (900-2 <sup>3</sup> / <sub>4</sub> )