

APP CRS **302°**  
 Rwy Idg **5000**  
 TDZE **3333**  
 Apt Elev **3333**

# RNAV (GPS) RWY 30

PINE RIDGE (IEN)

RNP APCH.

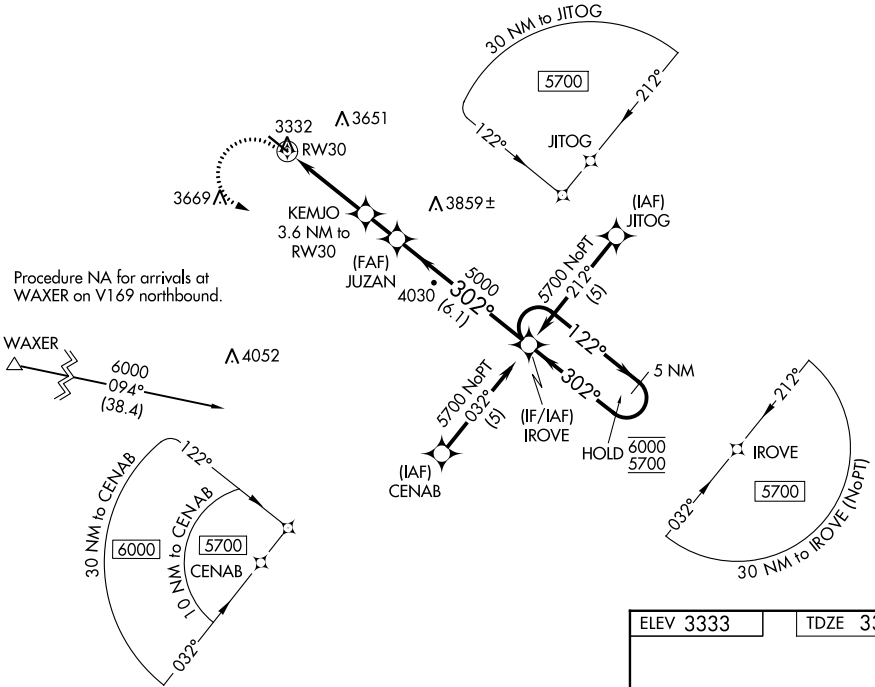
**▽**  
**▲** Rwy 30 helicopter visibility reduction below ¾ SM NA.

MISSED APPROACH: Climbing left turn to 5700 direct IROVE and hold.

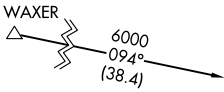
ASOS  
**126.775**

DENVER CENTER  
**127.95 338.2**

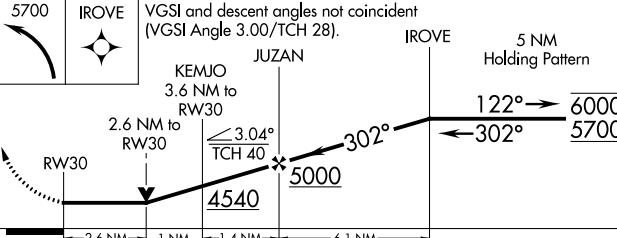
CTAF  
**122.9 0**



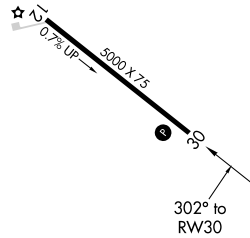
Procedure NA for arrivals at WAXER on V169 northbound.



**▲ 4425**



ELEV 3333 | TDZE 3333



CATEGORY	A	B	C	D
LNAV MDA	4180-1 847 (900-1)	4180-1¼ 847 (900-1¼)		NA
<b>C</b> CIRCLING	4180-1 847 (900-1)	4180-1¼ 847 (900-1¼)		NA

MIRL Rwy 12-30 0

NC-1, 31 OCT 2024 to 28 NOV 2024

NC-1, 31 OCT 2024 to 28 NOV 2024